

## beta 2 Microglobulin antibody [236-12301 (B2M-01)]

Cat. No. GTX20759

Host	Mouse
Clonality	Monoclonal
Isotype	IgG2a
Applications	WB, ICC/IF, IHC-P, FCM, IP, ELISA, RIA
Reactivity	Human

References ( 1 )

Package

100 µg

## Applications

## Application Note

\*Optimal dilutions/concentrations should be determined by the researcher.

Suggested dilution	Recommended dilution
WB	Assay dependent
ICC/IF	Assay dependent
IHC-P	Assay dependent
FCM	Assay dependent
IP	Assay dependent
ELISA	Assay dependent
RIA	Assay dependent

Not tested in other applications.

**Calculated MW** 14 kDa. ( [Note](#) )

## Product Note

This antibody reacts with beta2-microglobulin (beta2M) associated with cell-surface MHC Class I molecules and other membrane antigens as well as with soluble beta2-microglobulin.  
We do not recommend use of this product for Mouse,Rabbit,Bovine,Dog,Chicken samples.

## Properties

Form	Liquid
Buffer	PBS
Preservative	15mM Sodium azide
Storage	Store as concentrated solution. Centrifuge briefly prior to opening vial. Store at 4°C. DO NOT FREEZE.
Concentration	1 mg/ml (Please refer to the vial label for the specific concentration.)
Immunogen	Purified human beta2-microglobulin
Purification	Purified by precipitation and chromatography



For full product information, images and publications, please visit our [website](#).

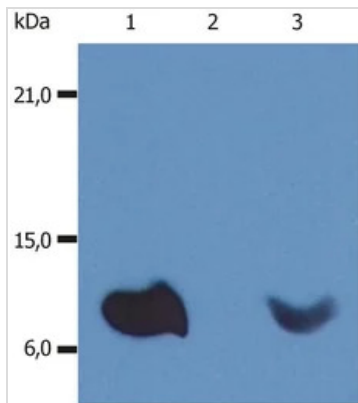
**Conjugation**

Unconjugated

**Note**

For laboratory research use only. Not for any clinical, therapeutic, or diagnostic use in humans or animals. Not for animal or human consumption.

Purchasers shall not, and agree not to enable third parties to, analyze, copy, reverse engineer or otherwise attempt to determine the structure or sequence of the product.

**DATA IMAGES**

**GTx20759 WB Image**

WB analysis of various samples (non-reducing) using GTx20759 beta 2 Microglobulin antibody [B2M-01].

Lane 1 : Raji cell lysate

Lane 2 : EL4 cell lysate

Lane 3 : U937 cell lysate


 For full product information, images and publications, please visit our [website](https://www.genetex.com).