

CD14 antibody [MEM-15]

Cat. No. GTX20760

Host	Mouse
Clonality	Monoclonal
Isotype	IgG1
Application	ICC/IF, FACS, IP
Reactivity	Human, Primate

Reference (1)

Package

100 µg

APPLICATION

Application Note

*Optimal dilutions/concentrations should be determined by the researcher.

Suggested dilution	Recommended dilution
ICC/IF	Assay dependent
FACS	Assay dependent
IP	Assay dependent

Not tested in other applications.

Calculated MW 40 kDa. ([Note](#))

Product Note

This antibody reacts with CD14, a 53-55 kDa GPI (glycosylphosphatidylinositol)-linked membrane glycoprotein expressed on monocytes, macrophages and weakly on granulocytes; also expressed by most tissue macrophages. And this antibody also reacts with soluble forms of CD14 found in serum and in the urine of some nephrotic patients.

PROPERTIES

Form	Liquid
Buffer	PBS
Preservative	15mM Sodium azide
Storage	Store as concentrated solution. Centrifuge briefly prior to opening vial. Store at 4°C. DO NOT FREEZE.
Concentration	1 mg/ml (Please refer to the vial label for the specific concentration.)
Immunogen	A crude mixture of human urinary proteins precipitated by ammonium sulphate from the urine of a patient suffering from proteinuria.
Purification	Protein A purified
Conjugation	Unconjugated



For full product information, images and publications, please visit our [website](#).

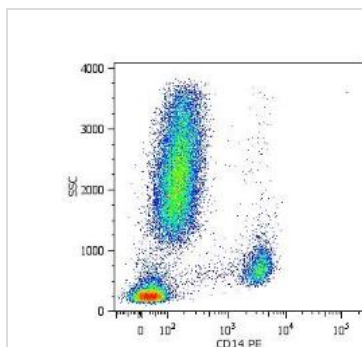
Date 2024 / 05 / 20 Page 1 of 2

For laboratory research use only. Not for any clinical, therapeutic, or diagnostic use in humans or animals. Not for animal or human consumption.

Note

Purchasers shall not, and agree not to enable third parties to, analyze, copy, reverse engineer or otherwise attempt to determine the structure or sequence of the product.

DATA IMAGES



GTx20760 FACS Image

Surface staining of human peripheral blood cells with anti-human CD14: PE (GTx18271)



For full product information, images and publications, please visit our [website](#).