

## HLA-DR + HLA-DP antibody [HL-38]

## Cat. No. GTX20766

<b>Host</b>	Mouse
<b>Clonality</b>	Monoclonal
<b>Isotype</b>	IgG2a
<b>Applications</b>	WB, IHC-P, FCM, IP
<b>Reactivity</b>	Human, Pig

Package  
100 µg

## Applications

## Application Note

\*Optimal dilutions/concentrations should be determined by the researcher.

Suggested dilution	Recommended dilution
WB	Assay dependent
IHC-P	Assay dependent
FCM	Assay dependent
IP	Assay dependent

Not tested in other applications.

**Product Note** This antibody recognizes common epitope on beta-chain of human HLA-DR and HLA-DP.

## Properties

<b>Form</b>	Liquid
<b>Buffer</b>	PBS
<b>Preservative</b>	15mM Sodium azide
<b>Storage</b>	Store as concentrated solution. Centrifuge briefly prior to opening vial. Store at 4°C. DO NOT FREEZE.
<b>Concentration</b>	1 mg/ml (Please refer to the vial label for the specific concentration.)
<b>Immunogen</b>	Raji Burkitt's lymphoma cell line
<b>Purification</b>	Protein A purified
<b>Conjugation</b>	Unconjugated

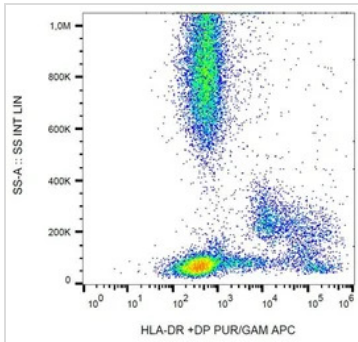
## Note

For laboratory research use only. Not for any clinical, therapeutic, or diagnostic use in humans or animals. Not for animal or human consumption.

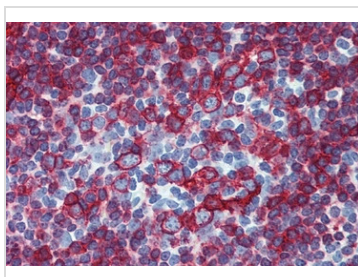
Purchasers shall not, and agree not to enable third parties to, analyze, copy, reverse engineer or otherwise attempt to determine the structure or sequence of the product.



For full product information, images and publications, please visit our [website](#).

**DATA IMAGES**

**GTX20766 FCM Image**

FACS analysis of human peripheral blood using GTX20766 HLA-DR + HLA-DP antibody [HL-38].


**GTX20766 IHC-P Image**

IHC-P analysis of human small intestine tissue using GTX20766 HLA-DR + HLA-DP antibody [HL-38].



For full product information, images and publications, please visit our [website](#).