

Transferrin antibody [HTF-14]

Cat. No. GTX20769

Host	Mouse
Clonality	Monoclonal
Isotype	IgG1
Applications	WB, ICC/IF, IHC-P, ELISA, RIA
Reactivity	Human, Rabbit, Pig

Package
100 µg

Applications

Application Note

*Optimal dilutions/concentrations should be determined by the researcher.

Suggested dilution	Recommended dilution
WB	Assay dependent
ICC/IF	Assay dependent
IHC-P	Assay dependent
ELISA	Assay dependent
RIA	Assay dependent

Not tested in other applications.

Product Note

This antibody recognizes an epitope located in the N-terminal domain of human serum transferrin. We do not recommend use of this product for Sheep,Bovine,Dog,Horse samples.

Properties

Form	Liquid
Buffer	PBS
Preservative	15mM Sodium azide
Storage	Store as concentrated solution. Centrifuge briefly prior to opening vial. Store at 4°C. DO NOT FREEZE.
Concentration	1 mg/ml (Please refer to the vial label for the specific concentration.)
Immunogen	Purified porcine transferrin.
Purification	Purified by precipitation and chromatography
Conjugation	Unconjugated

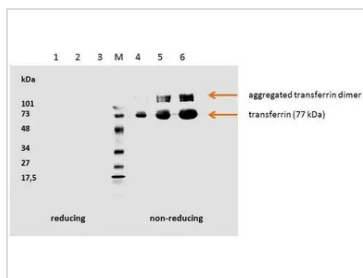


For full product information, images and publications, please visit our [website](#).

For laboratory research use only. Not for any clinical, therapeutic, or diagnostic use in humans or animals. Not for animal or human consumption.

Note
 Purchasers shall not, and agree not to enable third parties to, analyze, copy, reverse engineer or otherwise attempt to determine the structure or sequence of the product.

DATA IMAGES



GTX20769 WB Image

WB analysis of human transferrin using GTX20769 Transferrin antibody [HTF-14].
 Lane 1-3 : reducing hTransferrin (5µg/well, 3µg/well, 1µg/well)
 Lane 4-6 : non-reducing hTransferrin(1µg/well, 3µg/well, 5µg/well)



For full product information, images and publications, please visit our [website](#).