

Mouse Anti-Human IgE antibody [BE5]

Cat. No. GTX20775

Host	Mouse
Clonality	Monoclonal
Isotype	IgG1
Applications	WB, FCM, ELISA
Reactivity	Human

Package
100 µg

Applications

Application Note

*Optimal dilutions/concentrations should be determined by the researcher.

Suggested dilution	Recommended dilution
WB	Assay dependent
FCM	Assay dependent
ELISA	Assay dependent

Not tested in other applications.

Properties

Form	Liquid
Buffer	PBS
Preservative	0.1% Sodium azide
Storage	Store as concentrated solution. Centrifuge briefly prior to opening vial. Store at 4°C.
Concentration	Batch dependent (Please refer to the vial label for the specific concentration.)
Immunogen	IgE from myelomatous human serum
Purification	Protein A purified
Conjugation	Unconjugated

Note

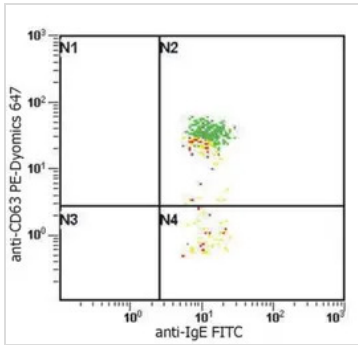
For laboratory research use only. Not for any clinical, therapeutic, or diagnostic use in humans or animals. Not for animal or human consumption.

Purchasers shall not, and agree not to enable third parties to, analyze, copy, reverse engineer or otherwise attempt to determine the structure or sequence of the product.



For full product information, images and publications, please visit our [website](#).

DATA IMAGES



GTX20775 FCM Image

Flow Cytometry analysis of basophil activation upon stimulation of normal (heparin-treated) whole blood with combination of IL-3 and Goat anti-IgE polyclonal antibody. Combination of anti-human IgE (GTX20775): FITC and anti-human CD63 (MEM-259): PE-Dyomics 647 (GTX79965) was used (analysis in basophil window).

Fig. 1A - staining of non-stimulated (control) sample

Fig. 1B - staining of IgE stimulated sample



For full product information, images and publications, please visit our [website](https://www.genetex.com).