

## Hairy Cell Leukemia antibody [DBA.44]

**Cat. No. GTX20779**

<b>Host</b>	Mouse
<b>Clonality</b>	Monoclonal
<b>Isotype</b>	IgM
<b>Applications</b>	IHC-P
<b>Reactivity</b>	Human

**Package**  
500 µl

## Applications

**Application Note**

\*Optimal dilutions/concentrations should be determined by the researcher.

Suggested dilution	Recommended dilution
IHC-P	1:15-1:30

**Note : Recommendations for antigen retrieval : Citrate Buffer pH 6.0**

Not tested in other applications.

**Product Note**

This antibody reacts with a subset of B-lymphocytes localized in the follicular mantle zone. It reacts with 97% of hairy cell leukemia cases. This antibody shows strong positive staining of about 35% of cases of high grade B cell lymphomas.

## Properties

<b>Form</b>	Liquid
<b>Buffer</b>	Tissue culture supernatant
<b>Preservative</b>	0.09% Sodium azide
<b>Storage</b>	Store as concentrated solution. Centrifuge briefly prior to opening vial. Store at 4°C.
<b>Immunogen</b>	DEAU cell line established from a large cell lymphoma.
<b>Purification</b>	Unpurified
<b>Conjugation</b>	Unconjugated

**Note**

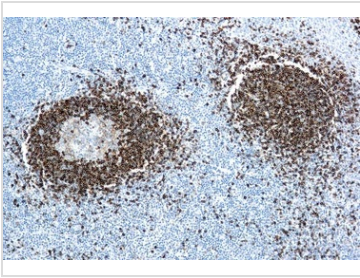
For laboratory research use only. Not for any clinical, therapeutic, or diagnostic use in humans or animals. Not for animal or human consumption.

Purchasers shall not, and agree not to enable third parties to, analyze, copy, reverse engineer or otherwise attempt to determine the structure or sequence of the product.



For full product information, images and publications, please visit our [website](#).

## DATA IMAGES

**GTX20779 IHC-P Image**

IHC-P analysis of human tonsil tissue using GTX20779 Hairy Cell Leukemia antibody [DBA.44].



For full product information, images and publications, please visit our [website](#).