

## Melanoma antibody [HMB45]

Cat. No. GTX20787

Host	Mouse
Clonality	Monoclonal
Isotype	IgG1
Application	IHC-P
Reactivity	Human

Reference ( 3 )

Package

250 µl

## APPLICATION

## Application Note

\*Optimal dilutions/concentrations should be determined by the researcher.

Suggested dilution	Recommended dilution
IHC-P	1:25-1:50

**Note : Recommendations for antigen retrieval : Citrate Buffer pH 6.0 at room temperature for 30 mins.**

Not tested in other applications.

## Product Note

This antibody reacts with a neuraminidase sensitive oligosaccharide side chain of a glycoconjugate present in immature melanosomes. It reacts with junctional and blue nevus cells. Non-melanocytic cells are negative.

## PROPERTIES

Form	Liquid
Buffer	Tissue culture supernatant
Preservative	0.09% Sodium azide
Storage	Store as concentrated solution. Centrifuge briefly prior to opening vial. Store at 4°C.
Immunogen	BALB/C mice were injected with extract of pigmented melanoma metastases from lymph nodes.
Purification	Unpurified
Conjugation	Unconjugated

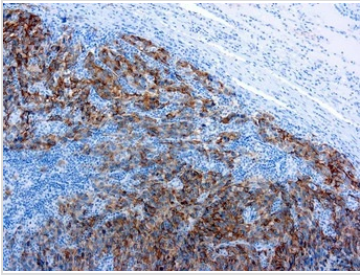
## Note

For laboratory research use only. Not for any clinical, therapeutic, or diagnostic use in humans or animals. Not for animal or human consumption.

Purchasers shall not, and agree not to enable third parties to, analyze, copy, reverse engineer or otherwise attempt to determine the structure or sequence of the product.



For full product information, images and publications, please visit our [website](#).

**DATA IMAGES**

**GTX20787 IHC-P Image**

IHC-P analysis of human melanoma tissue using GTX20787 Melanoma antibody [HMB45].



For full product information, images and publications, please visit our [website](#).