

CD46 antibody [MEM-258]

Cat. No. GTX20789

Host	Mouse
Clonality	Monoclonal
Isotype	IgG1
Applications	WB, IHC-P, FCM, IP
Reactivity	Human, Bovine

References (2)

Package

100 µg

Applications

Application Note

*Optimal dilutions/concentrations should be determined by the researcher.

Suggested dilution	Recommended dilution
WB	Assay dependent
IHC-P	Assay dependent
FCM	Assay dependent
IP	Assay dependent

Not tested in other applications.

Calculated MW 44 kDa. ([Note](#))**Product Note** This antibody recognizes an epitope on SCR4 (the membrane-proximal SCR) domain of CD46 (Membrane cofactor protein).

Properties

Form	Liquid
Buffer	PBS
Preservative	15mM Sodium azide
Storage	Store as concentrated solution. Centrifuge briefly prior to opening vial. Store at 4°C. DO NOT FREEZE.
Concentration	1 mg/ml (Please refer to the vial label for the specific concentration.)
Immunogen	HPB-ALL human T cell line
Purification	Protein A purified
Conjugation	Unconjugated

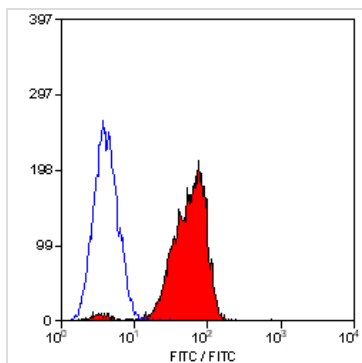
For full product information, images and publications, please visit our [website](#).

For laboratory research use only. Not for any clinical, therapeutic, or diagnostic use in humans or animals. Not for animal or human consumption.

Note

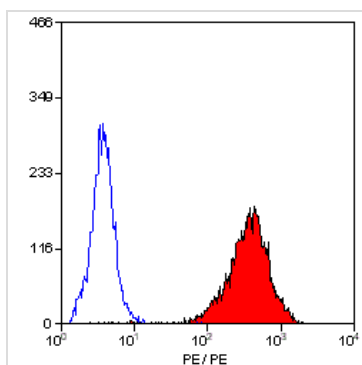
Purchasers shall not, and agree not to enable third parties to, analyze, copy, reverse engineer or otherwise attempt to determine the structure or sequence of the product.

DATA IMAGES



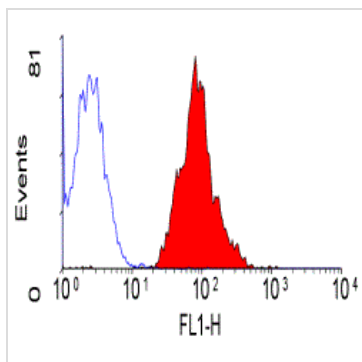
GTX20789 FCM Image

Staining of human peripheral blood lymphocytes with Mouse anti Human CD46 (GTX20789)



GTX20789 FCM Image

Staining of human peripheral blood lymphocytes with Mouse anti Human CD46:RPE (GTX75835)



GTX20789 FCM Image

Staining of human peripheral blood lymphocytes with Mouse anti Human CD46:FITC (GTX75834)



For full product information, images and publications, please visit our [website](#).