

TBP antibody [1TBP18]

Cat. No. GTX20818

Host	Mouse
Clonality	Monoclonal
Isotype	IgG1
Application	WB, ICC/IF, IP, Gel supershift assays
Reactivity	Human, Mouse, Rat

Reference (2)
Package
100 µg

APPLICATION

Application Note

*Optimal dilutions/concentrations should be determined by the researcher.

Suggested dilution	Recommended dilution
WB	Assay dependent
ICC/IF	Assay dependent
IP	Assay dependent
Gel supershift assays	Assay dependent

Not tested in other applications.

Calculated MW 38 kDa. ([Note](#))

Product Note This antibody recognizes an epitope within amino acid residues 1-20 of human, mouse and rat TBP. We do not recommend use of this product for Yeast,Drosophila,Silk worm,Xenopus samples.

PROPERTIES

Form	Liquid
Buffer	PBS
Preservative	No preservative
Storage	Store as concentrated solution. Centrifuge briefly prior to opening vial. For short-term storage (1-2 weeks), store at 4°C. For long-term storage, aliquot and store at -20°C or below. Avoid multiple freeze-thaw cycles.
Concentration	Batch dependent (Please refer to the vial label for the specific concentration.)
Immunogen	Recombinant human TBP.
Purification	Protein G purified
Conjugation	Unconjugated



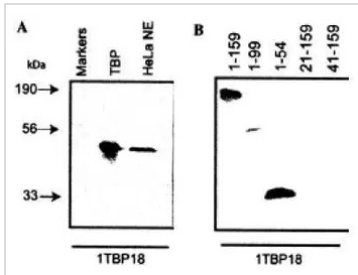
For full product information, images and publications, please visit our [website](#).

For laboratory research use only. Not for any clinical, therapeutic, or diagnostic use in humans or animals. Not for animal or human consumption.

Note

Purchasers shall not, and agree not to enable third parties to, analyze, copy, reverse engineer or otherwise attempt to determine the structure or sequence of the product.

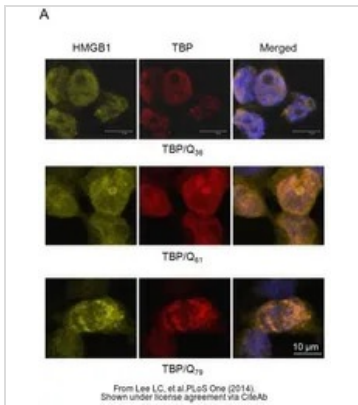
DATA IMAGES



GTX20818 WB Image

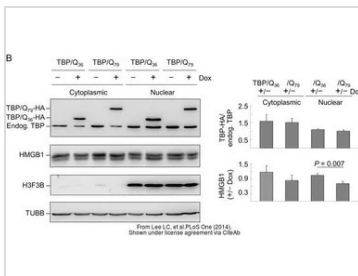
WB analysis of recombinant human TATA Binding Protein, HeLa cell nuclear extract (A), and TBP protein fragment lysate (B) using GTX20818 TBP antibody [1TBP18].

Dilution : 2µg/ml



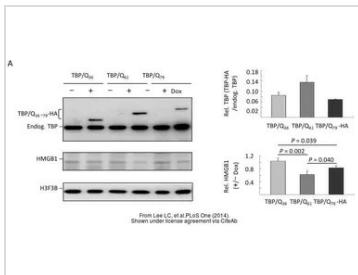
GTX20818 ICC/IF Image

The data was published in the journal PLoS One in 2014. [PMID: 25549101](https://pubmed.ncbi.nlm.nih.gov/25549101/)



GTX20818 WB Image

The data was published in the journal PLoS One in 2014. [PMID: 25549101](https://pubmed.ncbi.nlm.nih.gov/25549101/)



GTX20818 WB Image

The data was published in the journal PLoS One in 2014. [PMID: 25549101](https://pubmed.ncbi.nlm.nih.gov/25549101/)



For full product information, images and publications, please visit our [website](https://www.genetex.com).