

# Ki67 antibody

**Cat. No. GTX20833**

<b>Host</b>	Rabbit
<b>Clonality</b>	Polyclonal
<b>Isotype</b>	IgG
<b>Applications</b>	WB, ICC/IF, IHC-P, IHC-Fr, IHC
<b>Reactivity</b>	Human, Mouse, Rat

References ( 11 )

Package

500 µl

## Applications

### Application Note

For IHC-P: Use at a concentration of 1 0 - 2 0 µg / m l f o r 3 0 m i n a t R T. Staining of formalin/paraffin tissues requires boiling tissue sections in 10mM citrate buffer, pH 6.0, for 10-20 min followed by cooling at RT for 20 min. Optimal dilutions/concentrations should be determined by the end user.

**Calculated MW** 359 kDa. ( [Note](#) )

## Properties

<b>Form</b>	Liquid
<b>Buffer</b>	PBS, 0.2% BSA
<b>Preservative</b>	0.1% Sodium azide
<b>Storage</b>	Store as concentrated solution. Centrifuge briefly prior to opening vial. Store at 4°C. DO NOT FREEZE.
<b>Concentration</b>	1 mg/ml (Please refer to the vial label for the specific concentration.)
<b>Immunogen</b>	Synthetic peptide from the human Ki-67 all antigen.
<b>Purification</b>	Protein A affinity purified
<b>Conjugation</b>	Unconjugated

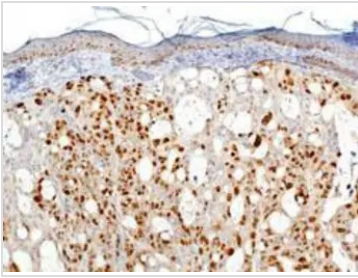
### Note

For laboratory research use only. Not for any clinical, therapeutic, or diagnostic use in humans or animals. Not for animal or human consumption.

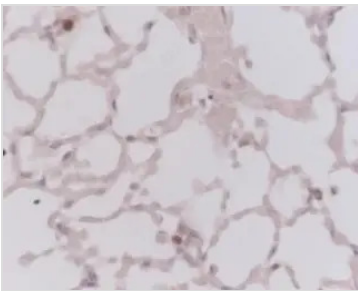
Purchasers shall not, and agree not to enable third parties to, analyze, copy, reverse engineer or otherwise attempt to determine the structure or sequence of the product.



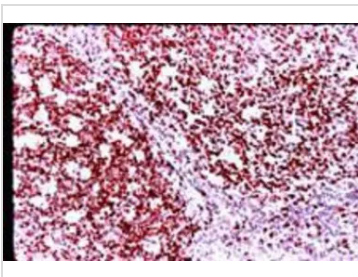
For full product information, images and publications, please visit our [website](#).

**DATA IMAGES**

**GTX20833 IHC Image**

HT-29 xenograft tumor in mouse 20x pretreatment w/ citrate pH 6.0 using anti-Ki67 antibody GTX20833 at 5 ug/mL for 30 min at RT.


**GTX20833 IHC Image**

This picture was kindly supplied as part of the review submitted by Dr Robert O'Donogue. Tissue sections from mouse lung were stained with GTX20833 at a dilution of 1/50.


**GTX20833 IHC-P Image**

Immunohistochemical analysis of formalin-fixed paraffin-embedded human tonsil using Ki-67 antibody. Signal is detected using ABC method with AEC chromogen



For full product information, images and publications, please visit our [website](#).