

CD68 antibody [PG-M1] (ready-to-use)

Cat. No. GTX20844

| | |
|---------------------|------------|
| Host | Mouse |
| Clonality | Monoclonal |
| Isotype | IgG3 |
| Applications | IHC-P |
| Reactivity | Human |

References (3)

Package

6 ml

Applications

Application Note

*Optimal dilutions/concentrations should be determined by the researcher.

| Suggested dilution | Recommended dilution |
|--------------------|----------------------|
| IHC-P | Assay dependent |

Not tested in other applications.

Properties

| | |
|---------------------|---|
| Form | Liquid |
| Buffer | Tissue culture supernatant |
| Preservative | 0.09% Sodium azide |
| Storage | Store as concentrated solution. Centrifuge briefly prior to opening vial. Store at 4°C. |
| Immunogen | BALB/C mice were immunized with Gaucher's cells. |
| Purification | Unpurified |
| Conjugation | Unconjugated |

Note

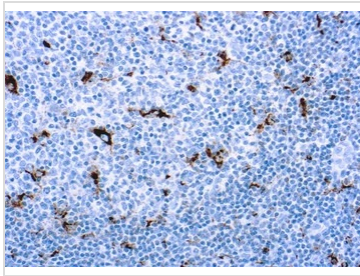
For laboratory research use only. Not for any clinical, therapeutic, or diagnostic use in humans or animals. Not for animal or human consumption.

Purchasers shall not, and agree not to enable third parties to, analyze, copy, reverse engineer or otherwise attempt to determine the structure or sequence of the product.



For full product information, images and publications, please visit our [website](#).

DATA IMAGES

**GTX20844 IHC-P Image**

IHC-P analysis of human tonsil tissue using GTX20844 CD68 antibody [PG-M1] (ready-to-use).



For full product information, images and publications, please visit our [website](#).