

## Mouse Anti-Human IgM antibody [R1/69] (ready-to-use)

Cat. No. GTX20865

Host	Mouse
Clonality	Monoclonal
Isotype	IgG1
Applications	IHC-P
Reactivity	Human

**Package**  
6 ml

## Applications

## Application Note

\*Optimal dilutions/concentrations should be determined by the researcher.

Suggested dilution	Recommended dilution
IHC-P	Assay dependent

Not tested in other applications.

## Product Note

This antibody reacts with the heavy chain present in all types of human IgM. It stains B cell follicles in human lymphoid tissues.

## Properties

Form	Liquid
Buffer	Ascites
Preservative	0.09% Sodium azide
Storage	Store as concentrated solution. Centrifuge briefly prior to opening vial. Store at 4°C.
Immunogen	Human lymphoid cells.
Purification	Unpurified
Conjugation	Unconjugated

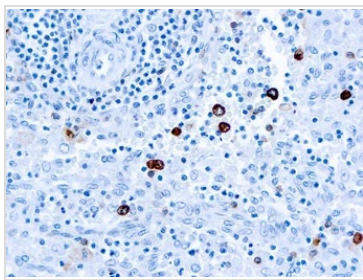
## Note

For laboratory research use only. Not for any clinical, therapeutic, or diagnostic use in humans or animals. Not for animal or human consumption.

Purchasers shall not, and agree not to enable third parties to, analyze, copy, reverse engineer or otherwise attempt to determine the structure or sequence of the product.



For full product information, images and publications, please visit our [website](#).

**DATA IMAGES**

**GTX20865 IHC-P Image**

IHC-P analysis of human tonsil tissue using GTX20865 Human IgM antibody [R1/69] (ready-to-use).



For full product information, images and publications, please visit our [website](#).