

basic Cytokeratin antibody [AE3] (ready-to-use)

Cat. No. GTX20870

Host	Mouse
Clonality	Monoclonal
Isotype	IgG1
Applications	IHC-P
Reactivity	Human

Package
6 ml

Applications

Application Note

*Optimal dilutions/concentrations should be determined by the researcher.

Suggested dilution	Recommended dilution
IHC-P	Assay dependent

Note : Recommendations for antigen retrieval : EDTA buffer pH 8.0

Not tested in other applications.

Product Note

This antibody recognizes basic (Type II or HMW) cytokeratins, which includes 67kDa (CK1); 64kDa (CK3); 59kDa (CK4); 58kDa (CK5); 56kDa (CK6); 52kDa (CK8).

Properties

Form	Liquid
Buffer	PBS
Preservative	0.09% Sodium azide
Storage	Store as concentrated solution. Centrifuge briefly prior to opening vial. Store at 4°C.
Concentration	Batch dependent (Please refer to the vial label for the specific concentration.)
Immunogen	Human epidermal keratin.
Purification	Purified IgG
Conjugation	Unconjugated

Note

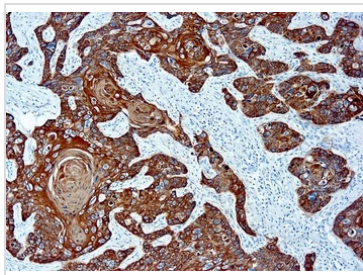
For laboratory research use only. Not for any clinical, therapeutic, or diagnostic use in humans or animals. Not for animal or human consumption.

Purchasers shall not, and agree not to enable third parties to, analyze, copy, reverse engineer or otherwise attempt to determine the structure or sequence of the product.



For full product information, images and publications, please visit our [website](#).

DATA IMAGES



GTX20870 IHC-P Image

IHC-P analysis of human squamous lung carcinoma tissue using GTX20870 basic Cytokeratin antibody [AE3] (ready-to-use).



For full product information, images and publications, please visit our [website](#).