

## CD30 antibody [Ber-H2] (ready-to-use)

**Cat. No. GTX20871**

<b>Host</b>	Mouse
<b>Clonality</b>	Monoclonal
<b>Isotype</b>	IgG1
<b>Applications</b>	IHC-P
<b>Reactivity</b>	Human

References ( 1 )

★★★★★ Review ( 1 )

Package  
6 ml

## Applications

**Application Note**

\*Optimal dilutions/concentrations should be determined by the researcher.

Suggested dilution	Recommended dilution
IHC-P	Assay dependent

**Note : Recommendations for antigen retrieval : EDTA buffer pH 8.0**

Not tested in other applications.

**Product Note**

This antibody recognizes a single chain glycoprotein of 105/120kDa, identified as CD30/Ki-1. Its epitope is located between aa112-412.

## Properties

<b>Form</b>	Liquid
<b>Buffer</b>	Tissue culture supernatant
<b>Preservative</b>	0.05% Sodium azide
<b>Storage</b>	Store as concentrated solution. Centrifuge briefly prior to opening vial. Store at 4°C.
<b>Immunogen</b>	Co cell line established from a patient with Hodgkin's disease of T-cell lineage.
<b>Purification</b>	Unpurified
<b>Conjugation</b>	Unconjugated

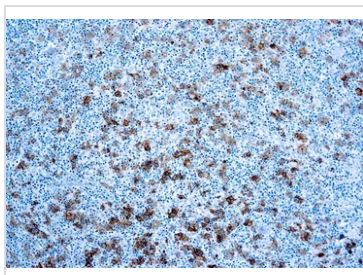
**Note**

For laboratory research use only. Not for any clinical, therapeutic, or diagnostic use in humans or animals. Not for animal or human consumption.

Purchasers shall not, and agree not to enable third parties to, analyze, copy, reverse engineer or otherwise attempt to determine the structure or sequence of the product.

For full product information, images and publications, please visit our [website](#).

## DATA IMAGES

**GTX20871 IHC-P Image**

IHC-P analysis of human Hodgkin's lymphoma tissue using GTX20871 CD30 antibody [Ber-H2] (ready-to-use).



For full product information, images and publications, please visit our [website](#).