

Gastrin antibody (ready-to-use)

Cat. No. GTX20928

Host	Rabbit
Clonality	Polyclonal
Isotype	IgG
Application	IHC-P
Reactivity	Human

Package
6 ml

APPLICATION

Application Note

*Optimal dilutions/concentrations should be determined by the researcher.

Suggested dilution	Recommended dilution
IHC-P	Assay dependent

Not tested in other applications.

Calculated MW 11 kDa. ([Note](#))**Product Note**

This antibody reacts with human gastrin I and human gastrin I fragments. No cross-reactivity was observed with rat gastrin, human big gastrin, human gastrin releasing peptide, sulfated cholecystokinin amide, non-sulfated cholecystokinin amide and cholecystokinin.

PROPERTIES

Form	Liquid
Buffer	PBS
Preservative	0.09% Sodium azide
Storage	Store as concentrated solution. Centrifuge briefly prior to opening vial. Store at 4°C.
Concentration	Batch dependent (Please refer to the vial label for the specific concentration.)
Immunogen	Recombinant gastrin conjugated to KLH.
Purification	Purified IgG
Conjugation	Unconjugated

Note

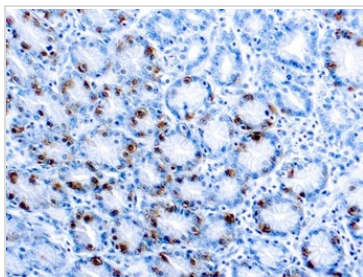
For laboratory research use only. Not for any clinical, therapeutic, or diagnostic use in humans or animals. Not for animal or human consumption.

Purchasers shall not, and agree not to enable third parties to, analyze, copy, reverse engineer or otherwise attempt to determine the structure or sequence of the product.



For full product information, images and publications, please visit our [website](#).

DATA IMAGES



GTX20928 IHC-P Image

IHC-P analysis of human stomach tissue using GTX20928 Gastrin antibody (ready-to-use).



For full product information, images and publications, please visit our [website](#).