

## Rabbit Anti-Human IgA antibody (ready-to-use)

**Cat. No. GTX20937**

<b>Host</b>	Rabbit
<b>Clonality</b>	Polyclonal
<b>Isotype</b>	IgG
<b>Applications</b>	IHC-P
<b>Reactivity</b>	Human

References ( 1 )  
Package  
6 ml

## Applications

**Application Note**

\*Optimal dilutions/concentrations should be determined by the researcher.

Suggested dilution	Recommended dilution
IHC-P	Assay dependent

**Note : Recommendations for antigen retrieval : Citrate Buffer pH 6.0**

Not tested in other applications.

**Product Note** This antibody reacts with  $\alpha$ -chains of human IgA. This antibody has been adsorbed to a very high level of specificity.

## Properties

<b>Form</b>	Liquid
<b>Buffer</b>	PBS
<b>Preservative</b>	0.09% Sodium azide
<b>Storage</b>	Store as concentrated solution. Centrifuge briefly prior to opening vial. Store at 4°C.
<b>Concentration</b>	Batch dependent (Please refer to the vial label for the specific concentration.)
<b>Immunogen</b>	IgA isolated from a pool of normal human sera.
<b>Purification</b>	Purified IgG
<b>Conjugation</b>	Unconjugated

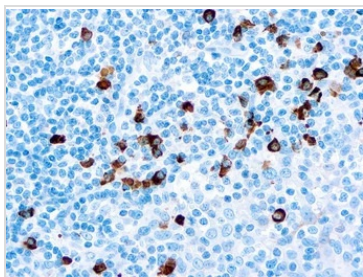
**Note**

For laboratory research use only. Not for any clinical, therapeutic, or diagnostic use in humans or animals. Not for animal or human consumption.

Purchasers shall not, and agree not to enable third parties to, analyze, copy, reverse engineer or otherwise attempt to determine the structure or sequence of the product.



For full product information, images and publications, please visit our [website](#).

**DATA IMAGES**

**GTX20937 IHC-P Image**

IHC-P analysis of human tonsil tissue using GTX20937 Human IgA antibody (ready-to-use).



For full product information, images and publications, please visit our [website](#).