

Lysozyme antibody (ready-to-use)

Cat. No. GTX20942

Host	Rabbit
Clonality	Polyclonal
Isotype	IgG
Applications	IHC-P
Reactivity	Human

Package
6 ml

Applications

Application Note

*Optimal dilutions/concentrations should be determined by the researcher.

Suggested dilution	Recommended dilution
IHC-P	Assay dependent

Not tested in other applications.

Product Note

This antibody reacts with lysozyme. It stains granulocytes, monocytes and macrophages in human tonsil, skin and colon. This antibody does not cross-react with any other cell types.

Properties

Form	Liquid
Buffer	PBS
Preservative	0.09% Sodium azide
Storage	Store as concentrated solution. Centrifuge briefly prior to opening vial. Store at 4°C.
Concentration	Batch dependent (Please refer to the vial label for the specific concentration.)
Immunogen	Lysozyme isolated from urine of patients with monocytic leukemia.
Purification	Purified IgG
Conjugation	Unconjugated

Note

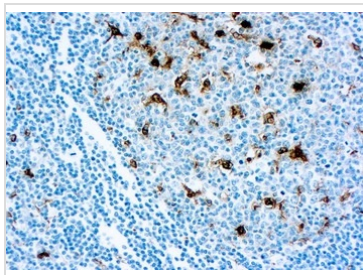
For laboratory research use only. Not for any clinical, therapeutic, or diagnostic use in humans or animals. Not for animal or human consumption.

Purchasers shall not, and agree not to enable third parties to, analyze, copy, reverse engineer or otherwise attempt to determine the structure or sequence of the product.



For full product information, images and publications, please visit our [website](#).

DATA IMAGES



GTX20942 IHC-P Image

IHC-P analysis of human tonsil tissue using GTX20942 Lysozyme antibody (ready-to-use).



For full product information, images and publications, please visit our [website](#).