

# HMW Kininogen antibody [2B5]

**Cat. No. GTX21005**

<b>Host</b>	Mouse
<b>Clonality</b>	Monoclonal
<b>Isotype</b>	IgG1
<b>Applications</b>	Coagulation assay, WB, ELISA
<b>Reactivity</b>	Human

**Package**  
50 µg

## Applications

### Application Note

\*Optimal dilutions/concentrations should be determined by the researcher.

Suggested dilution	Recommended dilution
WB	Assay dependent
ELISA	Assay dependent
Coagulation assay	Assay dependent

Not tested in other applications.

**Calculated MW** 72 kDa. ( [Note](#) )

**Product Note** This antibody recognizes the common heavy chain (~64kDa) of human HMWK and can neutralize the inhibitory activity of HMWK on platelet calpain.

## Properties

<b>Form</b>	Liquid
<b>Buffer</b>	PBS
<b>Preservative</b>	No preservatives
<b>Storage</b>	Store as concentrated solution. Centrifuge briefly prior to opening vial. For short-term storage (1-2 weeks), store at 4°C. For long-term storage, aliquot and store at -20°C or below. Avoid multiple freeze-thaw cycles.
<b>Concentration</b>	Batch dependent (Please refer to the vial label for the specific concentration.)
<b>Immunogen</b>	Purified human high molecular weight kininogen.
<b>Purification</b>	Protein G purified
<b>Conjugation</b>	Unconjugated



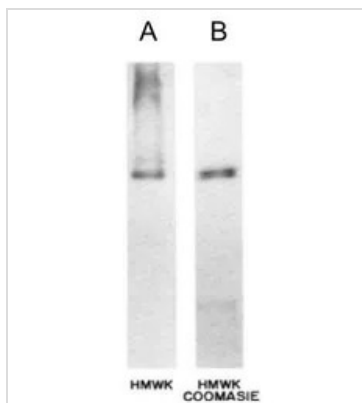
For full product information, images and publications, please visit our [website](#).

For laboratory research use only. Not for any clinical, therapeutic, or diagnostic use in humans or animals. Not for animal or human consumption.

## Note

Purchasers shall not, and agree not to enable third parties to, analyze, copy, reverse engineer or otherwise attempt to determine the structure or sequence of the product.

## DATA IMAGES



### GTx21005 WB Image

WB analysis of purified HMWK protein using GTx21005 HMW Kininogen antibody [2B5].

Lane A : WB staining

Lane B : Coomassie Blue staining



For full product information, images and publications, please visit our [website](#).