

Factor XII Light chain antibody [C6B7]

Cat. No. GTX21008

Host	Mouse
Clonality	Monoclonal
Isotype	IgG1
Applications	Coagulation assay, WB, ELISA
Reactivity	Human, Mouse

References (2)

Package

125 µg

Applications

Application Note

*Optimal dilutions/concentrations should be determined by the researcher.

Suggested dilution	Recommended dilution
WB	Assay dependent
ELISA	Assay dependent
Coagulation assay	Assay dependent

Not tested in other applications.

Calculated MW 68 kDa. ([Note](#))

Properties

Form	Liquid
Buffer	PBS
Preservative	No preservatives
Storage	Store as concentrated solution. Centrifuge briefly prior to opening vial. For short-term storage (1-2 weeks), store at 4°C. For long-term storage, aliquot and store at -20°C or below. Avoid multiple freeze-thaw cycles.
Concentration	Batch dependent (Please refer to the vial label for the specific concentration.)
Immunogen	Purified human Factor XII.
Purification	Protein G purified
Conjugation	Unconjugated

Note

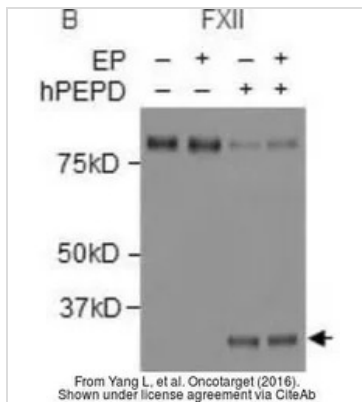
For laboratory research use only. Not for any clinical, therapeutic, or diagnostic use in humans or animals. Not for animal or human consumption.

Purchasers shall not, and agree not to enable third parties to, analyze, copy, reverse engineer or otherwise attempt to determine the structure or sequence of the product.



For full product information, images and publications, please visit our [website](#).

DATA IMAGES



GTX21008 WB Image

The data was published in the journal Oncotarget in 2016. [PMID: 27248165](https://pubmed.ncbi.nlm.nih.gov/27248165/)



For full product information, images and publications, please visit our [website](https://www.genetex.com).