

ICAM3 antibody [MEM-171]

Cat. No. GTX21048

Host	Mouse
Clonality	Monoclonal
Isotype	IgG1
Applications	FCM, IP
Reactivity	Human

Package
100 µg

Applications

Application Note

*Optimal dilutions/concentrations should be determined by the researcher.

Suggested dilution	Recommended dilution
FCM	Assay dependent
IP	Assay dependent

Not tested in other applications.

Product Note This antibody recognizes an epitope in the D2 domain of CD50 (ICAM-3).

Properties

Form	Liquid
Buffer	PBS
Preservative	15mM Sodium azide
Storage	Store as concentrated solution. Centrifuge briefly prior to opening vial. Store at 4°C. DO NOT FREEZE.
Concentration	1 mg/ml (Please refer to the vial label for the specific concentration.)
Immunogen	Human granulocytes
Purification	Protein A purified
Conjugation	Unconjugated

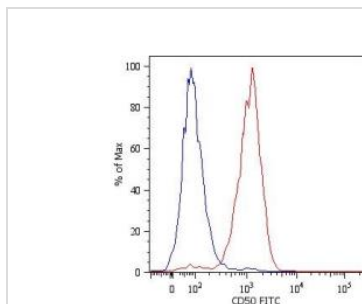
Note For laboratory research use only. Not for any clinical, therapeutic, or diagnostic use in humans or animals. Not for animal or human consumption.

Purchasers shall not, and agree not to enable third parties to, analyze, copy, reverse engineer or otherwise attempt to determine the structure or sequence of the product.



For full product information, images and publications, please visit our [website](#).

DATA IMAGES



GTX21048 FCM Image

Surface staining of JURKAT human leukemia T cell line with anti-human ICAM3: FITC (GTX78324)



For full product information, images and publications, please visit our [website](#).

Date 2026 / 01 / 09 Page 2 of 2