

## Mouse Anti-Human kappa light chain antibody [MEM-09]

Cat. No. GTX21050

|              |                                   |
|--------------|-----------------------------------|
| Host         | Mouse                             |
| Clonality    | Monoclonal                        |
| Isotype      | IgG1                              |
| Applications | WB, ICC/IF, IHC-P, FCM, IP, ELISA |
| Reactivity   | Human                             |

References ( 3 )

Package

100 µg

## Applications

## Application Note

\*Optimal dilutions/concentrations should be determined by the researcher.

| Suggested dilution | Recommended dilution |
|--------------------|----------------------|
| WB                 | Assay dependent      |
| ICC/IF             | Assay dependent      |
| IHC-P              | Assay dependent      |
| FCM                | Assay dependent      |
| IP                 | Assay dependent      |
| ELISA              | Assay dependent      |

Not tested in other applications.

## Product Note

This antibody reacts with kappa light chains (22.5 kDa). Material immunoprecipitated from human serum with the antibody MEM-09 consists of IgG and traces of IgM.

## Properties

|               |  |
|---------------|--|
| Form          | Liquid   |
| Buffer        | PBS  |
| Preservative  | 15mM Sodium azide  |
| Storage       | Store as concentrated solution. Centrifuge briefly prior to opening vial. Store at 4°C. DO NOT FREEZE. |
| Concentration | 1 mg/ml (Please refer to the vial label for the specific concentration.)                               |
| Immunogen     | Crude thymus membrane fraction.  |
| Purification  | Protein A purified   |
| Conjugation   | Unconjugated   |



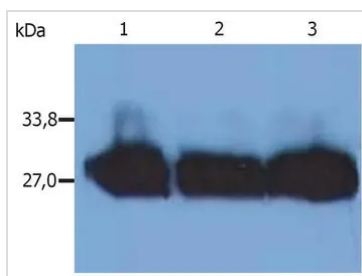
For full product information, images and publications, please visit our [website](#).

For laboratory research use only. Not for any clinical, therapeutic, or diagnostic use in humans or animals. Not for animal or human consumption.

**Note**

Purchasers shall not, and agree not to enable third parties to, analyze, copy, reverse engineer or otherwise attempt to determine the structure or sequence of the product.

#### DATA IMAGES



#### GTX21050 WB Image

WB analysis of human blood serum of different healthy donors using GTX21050 Human kappa Light chain antibody [MEM-09].



For full product information, images and publications, please visit our [website](#).