

CD8 antibody [MEM-31]

Cat. No. GTX21087

Host	Mouse
Clonality	Monoclonal
Isotype	IgG2a
Applications	FCM, IP, MS
Reactivity	Human

Package
100 µg

Applications

Application Note

*Optimal dilutions/concentrations should be determined by the researcher.

Suggested dilution	Recommended dilution
FCM	Assay dependent
IP	Assay dependent
MS	Assay dependent

Not tested in other applications.

Product Note

This antibody recognizes a conformationally-dependent epitope of CD8. The antibody does not react with formaldehyde-fixed cells; negative in Western blotting application.

Properties

Form	Liquid
Buffer	PBS
Preservative	15mM Sodium azide
Storage	Store as concentrated solution. Centrifuge briefly prior to opening vial. Store at 4°C. DO NOT FREEZE.
Concentration	1 mg/ml (Please refer to the vial label for the specific concentration.)
Immunogen	Crude thymus membrane fraction.
Purification	Protein A purified
Conjugation	Unconjugated

Note

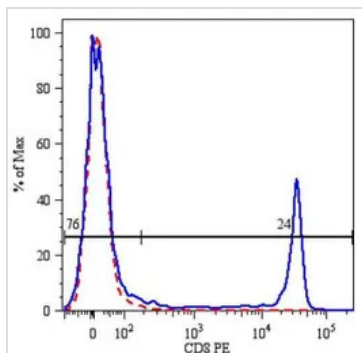
For laboratory research use only. Not for any clinical, therapeutic, or diagnostic use in humans or animals. Not for animal or human consumption.

Purchasers shall not, and agree not to enable third parties to, analyze, copy, reverse engineer or otherwise attempt to determine the structure or sequence of the product.



For full product information, images and publications, please visit our [website](#).

DATA IMAGES



GTX21087 FCM Image

Surface staining of human peripheral blood lymphocytes using anti-human CD8: PE (GTX78259).



For full product information, images and publications, please visit our [website](#).

Date 2026 / 01 / 30 Page 2 of 2