

Fas antibody [LT95]

Cat. No. GTX21088

Host	Mouse
Clonality	Monoclonal
Isotype	IgG1
Applications	IHC-P, FCM
Reactivity	Human

Package
100 µg

Applications

Application Note

*Optimal dilutions/concentrations should be determined by the researcher.

Suggested dilution	Recommended dilution
IHC-P	Assay dependent
FCM	Assay dependent

Not tested in other applications.

Product Note This antibody recognizes a functional epitope of Fas molecule.

Properties

Form	Liquid
Buffer	PBS
Preservative	15mM Sodium azide
Storage	Store as concentrated solution. Centrifuge briefly prior to opening vial. Store at 4°C. DO NOT FREEZE.
Concentration	1 mg/ml (Please refer to the vial label for the specific concentration.)
Immunogen	HUT-78 human T cell lymphoma cell line
Purification	Protein A purified
Conjugation	Unconjugated

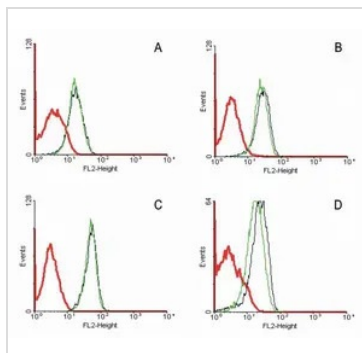
Note

For laboratory research use only. Not for any clinical, therapeutic, or diagnostic use in humans or animals. Not for animal or human consumption.

Purchasers shall not, and agree not to enable third parties to, analyze, copy, reverse engineer or otherwise attempt to determine the structure or sequence of the product.



For full product information, images and publications, please visit our [website](#).

DATA IMAGES

GTX21088 FCM Image

FACS analysis of various hematopoietic cell lines using GTX21088 Fas antibody [LT95].

Red : Isotype mouse IgG1 control

Black : positive control CD95 monoclonal antibody (DX2)

Green : GTX21088

Panel A : Jurkat cells

Panel B : Ramos cells

Panel C : CEM cells

Panel D : Molt-4 cells



For full product information, images and publications, please visit our [website](https://www.genetex.com).