

CD4 antibody [MEM-241]

Cat. No. GTX21089

Host	Mouse
Clonality	Monoclonal
Isotype	IgG1
Application	WB, FACS, MS
Reactivity	Human

Reference (2)

Package

100 µg

APPLICATION

Application Note

*Optimal dilutions/concentrations should be determined by the researcher.

Suggested dilution	Recommended dilution
WB	Assay dependent
FACS	Assay dependent
MS	Assay dependent

Not tested in other applications.

Calculated MW 51 kDa. ([Note](#))

PROPERTIES

Form	Liquid
Buffer	PBS
Preservative	15mM Sodium azide
Storage	Store as concentrated solution. Centrifuge briefly prior to opening vial. Store at 4°C. DO NOT FREEZE.
Concentration	1 mg/ml (Please refer to the vial label for the specific concentration.)
Immunogen	2 N-terminal domains of human CD4 fused to human IgG1 Fc
Purification	Protein A purified
Conjugation	Unconjugated

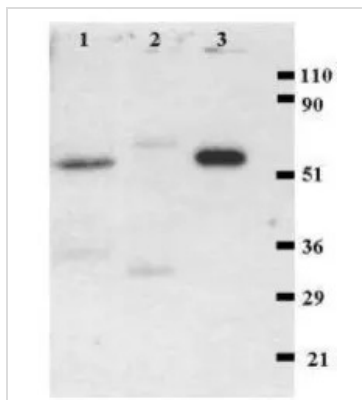
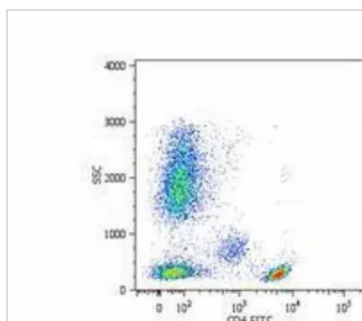
Note

For laboratory research use only. Not for any clinical, therapeutic, or diagnostic use in humans or animals. Not for animal or human consumption.

Purchasers shall not, and agree not to enable third parties to, analyze, copy, reverse engineer or otherwise attempt to determine the structure or sequence of the product.



For full product information, images and publications, please visit our [website](#).

DATA IMAGES

GTX21089 WB Image

GTX21089 FACS Image

Surface staining of human peripheral blood cells with anti-human CD4 [MEM-241] (FITC).



For full product information, images and publications, please visit our [website](#).