

CD21 antibody [LT21]

Cat. No. GTX21090

Host	Mouse
Clonality	Monoclonal
Isotype	IgG1
Application	IHC-Fr, FACS
Reactivity	Human, Bovine, Dog, Pig

Package
100 µg

APPLICATION

Application Note

*Optimal dilutions/concentrations should be determined by the researcher.

Suggested dilution	Recommended dilution
IHC-Fr	Assay dependent
FACS	Assay dependent

Not tested in other applications.

Calculated MW 113 kDa. ([Note](#))

PROPERTIES

Form	Liquid
Buffer	PBS
Preservative	15mM Sodium azide
Storage	Store as concentrated solution. Centrifuge briefly prior to opening vial. Store at 4°C. DO NOT FREEZE.
Concentration	1 mg/ml (Please refer to the vial label for the specific concentration.)
Immunogen	IM9 human B-lymphoblastoid cell line
Purification	Purified by precipitation and chromatography
Conjugation	Unconjugated

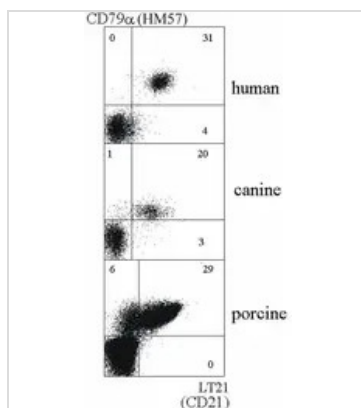
Note

For laboratory research use only. Not for any clinical, therapeutic, or diagnostic use in humans or animals. Not for animal or human consumption.

Purchasers shall not, and agree not to enable third parties to, analyze, copy, reverse engineer or otherwise attempt to determine the structure or sequence of the product.



For full product information, images and publications, please visit our [website](#).

DATA IMAGES

GTX21090 FACS Image

FACS analysis of human, dog and pig B lymphocytes using GTX21090 CD21 antibody [LT21].



For full product information, images and publications, please visit our [website](https://www.genetex.com).