

## MDM2 (phospho Ser185) antibody

Cat. No. GTX21094

Host	Rabbit
Clonality	Polyclonal
Isotype	IgG
Applications	WB, IP, ELISA
Reactivity	Human, Mouse

Package

50 µg

## Applications

## Application Note

\*Optimal dilutions/concentrations should be determined by the researcher.

Suggested dilution	Recommended dilution
WB	1:500-1:2000
IP	1:100
ELISA	1:3000-1:12000

Not tested in other applications.

Calculated MW 55 kDa. ( [Note](#) )

## Product Note

This antibody was raised against mouse MDM2 phosphorylated at Ser185. Based on internal testing, it is able to recognize human MDM2 protein when phosphorylated at Ser190. Reactivity occurs against Mouse MDM2 pS185 protein and the antibody is specific for the phosphorylated form of the protein. Reactivity with non-phosphorylated mouse MDM2 is minimal by ELISA and Western blot.

## Properties

Form	Liquid
Buffer	20mM Potassium Phosphate, 150mM NaCl
Preservative	0.01% Sodium azide
Storage	Store as concentrated solution. Centrifuge briefly prior to opening vial. For short-term storage (1-2 weeks), store at 4°C. For long-term storage, aliquot and store at -20°C or below. Avoid multiple freeze-thaw cycles.
Concentration	1 mg/ml (Please refer to the vial label for the specific concentration.)
Immunogen	Synthetic peptide corresponding to an internal region near aa 175-200 of mouse MDM2.
Purification	Purified by antigen-affinity chromatography. From serum
Conjugation	Unconjugated



For full product information, images and publications, please visit our [website](#).

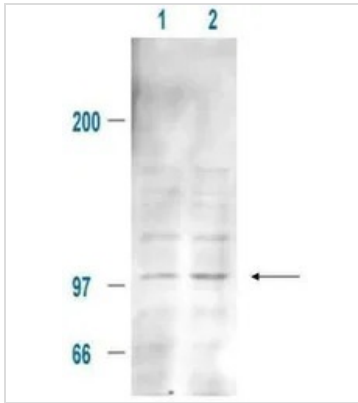
Date 2026 / 01 / 08 Page 1 of 2

For laboratory research use only. Not for any clinical, therapeutic, or diagnostic use in humans or animals. Not for animal or human consumption.

**Note**

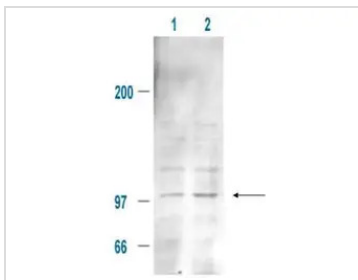
Purchasers shall not, and agree not to enable third parties to, analyze, copy, reverse engineer or otherwise attempt to determine the structure or sequence of the product.

## DATA IMAGES



### GTx21094 WB Image

Affinity Purified Anti-MDM2 pS185 (Rabbit) is shown to detect a 102 kDa band (arrow) corresponding to phosphorylated mouse MDM2 present in a 293T whole cell lysate. Cells were serum-starved for 24 hours prior to harvest. Approximately 20 ug of lysate was loaded per lane for SDS-PAGE. Untreated cells are shown in lane 1, whereas cells in lane 2 were treated with IGF-1 (100 ng/ml) for 20 min prior to harvest. Follow reaction of antibody with a 1:2000 dilution of HRP Goat-a-Rabbit IgG for visualization.



### GTx21094 WB Image

WB analysis of 293T whole cell lysate using GTx21094 MDM2 (phospho Ser185) antibody.

Lane 1 : Untreated whole cell lysate

Lane 2 : 100 ng/mL IGF-1 treated whole cell lysate

Dilution : 20 µg



For full product information, images and publications, please visit our [website](#).