

6X His tag antibody (HRP)

Cat. No. GTX21187

Host	Rabbit
Clonality	Polyclonal
Isotype	IgG
Application	WB, ICC/IF, ELISA, IHC
Reactivity	Species independent

Reference (1)
Package
100 µg

APPLICATION

Application Note

*Optimal dilutions/concentrations should be determined by the researcher.

Suggested dilution	Recommended dilution
WB	1:10,000-1:100,000
ICC/IF	1:200-1:500
ELISA	1:10,000-1:100,000
IHC	Assay dependent

Not tested in other applications.

Product Note This antibody does not recognize all N-terminal 6-His tagged proteins.

PROPERTIES

Form	Liquid
Buffer	PBS, 0.2% BSA
Preservative	0.1% ProClin 400
Storage	Store as concentrated solution. Centrifuge briefly prior to opening vial. Store at 4°C.
Concentration	1 mg/ml (Please refer to the vial label for the specific concentration.)
Immunogen	6-His (HHHHHH) conjugated to KLH.
Purification	Purified by antigen-affinity chromatography
Conjugation	Horseradish peroxidase(HRP) Ratio : 4 HRP molecules per IgG molecule.

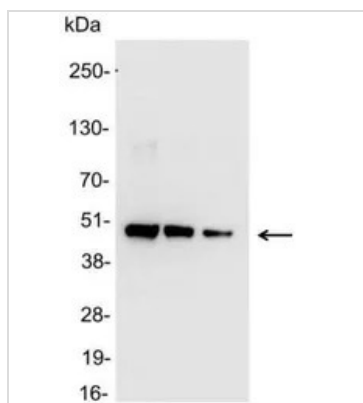
Note

For laboratory research use only. Not for any clinical, therapeutic, or diagnostic use in humans or animals. Not for animal or human consumption.

Purchasers shall not, and agree not to enable third parties to, analyze, copy, reverse engineer or otherwise attempt to determine the structure or sequence of the product.



For full product information, images and publications, please visit our [website](#).

DATA IMAGES

GTX21187 WB Image

WB analysis of 200, 100, and 50ng of E. coli lysate containing tagged fusion protein using GTX21187 6X His tag antibody (HRP).

Dilution : 1:25000



For full product information, images and publications, please visit our [website](#).