

CD11b/c equivalent antibody [OX 42]

Cat. No. GTX21211

Host	Mouse
Clonality	Monoclonal
Isotype	IgG2a
Applications	WB, IHC-Fr, FCM, IP, Immunoassay, IHC
Reactivity	Rat

References (3)

Package

125 µg

Applications

Application Note

FACS: 0.1 µg/ 10⁶ cells

Product Note

Recognises a common epitope shared by CD11b/c and precipitates three polypeptides of Mw160kD, 103kD and 95kD; a fainter band may also be seen at 133kD. It reacts with all macrophages in the peritoneal cavity, activated macrophages and Kupffer cells, but with only 35% of alveolar macrophages. It also binds to all granulocytes and to dendritic cells, cells with microglial morphology in brain, sparse thymic cortical cells and epidermal Langerhans cells. It inhibits complement mediated rosettes.

Properties

Form	Liquid
Buffer	PBS
Preservative	0.01% Sodium azide
Storage	Store as concentrated solution. Centrifuge briefly prior to opening vial. For short-term storage (1-2 weeks), store at 4°C. For long-term storage, aliquot and store at -20°C or below. Avoid multiple freeze-thaw cycles.
Concentration	1 mg/ml (Please refer to the vial label for the specific concentration.)
Immunogen	Rat macrophages
Purification	IgG fraction
Conjugation	Unconjugated

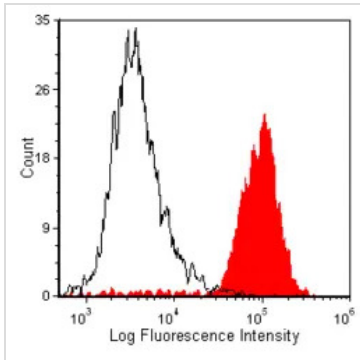
Note

For laboratory research use only. Not for any clinical, therapeutic, or diagnostic use in humans or animals. Not for animal or human consumption.

Purchasers shall not, and agree not to enable third parties to, analyze, copy, reverse engineer or otherwise attempt to determine the structure or sequence of the product.



For full product information, images and publications, please visit our [website](#).

DATA IMAGES

GTX21211 FCM Image

Wistar rat peritoneal macrophages were stained with anti-CD11b/c (clone: OX-42) (filled histogram) or mouse IgG2a isotype control (open histogram).



For full product information, images and publications, please visit our [website](https://www.genetex.com).