

Cyclin D1 antibody

Cat. No. GTX21224

| | |
|--------------|---------------|
| Host | Rabbit |
| Clonality | Polyclonal |
| Isotype | IgG |
| Applications | WB, IP, ELISA |
| Reactivity | Human |

Package
100 µl

Applications

Application Note

*Optimal dilutions/concentrations should be determined by the researcher.

| Suggested dilution | Recommended dilution |
|--------------------|----------------------|
| WB | 1:500-1:1000 |
| IP | 1:100 |
| ELISA | 1:2000-1:10000 |

Not tested in other applications.

| | |
|---------------|---|
| Calculated MW | 34 kDa. (Note) |
| Product Note | No reaction was observed against other related cyclins. |

Properties

| | |
|--------------|--|
| Form | Liquid |
| Buffer | Filtered-steriled serum |
| Preservative | 0.01% Sodium azide |
| Storage | Store as concentrated solution. Centrifuge briefly prior to opening vial. For short-term storage (1-2 weeks), store at 4°C. For long-term storage, aliquot and store at -20°C or below. Avoid multiple freeze-thaw cycles. |
| Immunogen | Full length fusion protein corresponding to the human gene sequence. |
| Purification | Unpurified |
| Conjugation | Unconjugated |

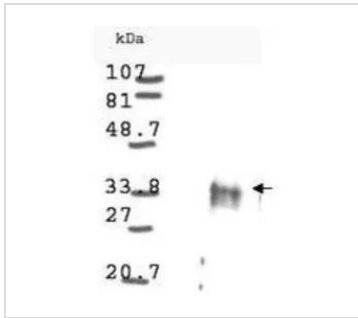
Note

For laboratory research use only. Not for any clinical, therapeutic, or diagnostic use in humans or animals. Not for animal or human consumption.

Purchasers shall not, and agree not to enable third parties to, analyze, copy, reverse engineer or otherwise attempt to determine the structure or sequence of the product.

For full product information, images and publications, please visit our [website](#).

DATA IMAGES



GTX21224 WB Image

Western blot analysis is shown using GeneTex Anti-Cyclin D1 antibody (GTX21224) to detect Human Cyclin D1 present in asynchronous HN30 cell lysates. HN30 cells, are from head and neck cancer cells that over express cyclin B1 and D1. Comparison to a molecular weight marker indicates a band of ~34 kDa corresponding to the expected molecular weight for the protein (arrowhead). The blot was incubated with a 1:500 dilution of the antibody at room temperature. Detection occurred using a 1:10,000 of HRP conjugated Goat-a-Rabbit IgG GTX27090 and chemiluminescence reagent with a 1min exposure time. Other detection systems will yield similar results.



For full product information, images and publications, please visit our [website](https://www.genetex.com).