

TGF beta antibody [TB21]

Cat. No. GTX21279

Host	Mouse
Clonality	Monoclonal
Isotype	IgG1
Applications	WB, IHC-P, IHC-Fr, FCM, ELISA, IHC, Neutralizing /Inhibition
Reactivity	Human, Mouse, Rat, Rabbit, Sheep, Bovine, Mink, Mustelid

References (24)

★★★★☆ Review (1)

Package

100 µg

Applications

Application Note

*Optimal dilutions/concentrations should be determined by the researcher.

Suggested dilution	Recommended dilution
WB	Assay dependent
IHC-P	Assay dependent
IHC-Fr	Assay dependent
FCM	Assay dependent
ELISA	Assay dependent
IHC	Assay dependent
Neutralizing /Inhibition	Assay dependent

Note : This antibody when used at an antibody concentration of 5-20 ng/mL will allow visualization of 100 ng/lane of TGF-beta. This antibody has been used to demonstrate TGF-beta in ovine ovarian tissue and human breast carcinoma at a dilution of 1:1000. As a consequence of the intense staining of the erythrocytes it is possible to locate a single cell within the ovarian stroma making it useful in locating very fine capillary networks within tissue.

This antibody neutralizes TGF-beta activity in vitro, in an inhibition assay of CCL/64 cell growth and neutralizes the growth promoting action of TGF-beta in the NRK-49F colony forming assay. The effect of microinjection of this antibody into one blastomere of two cell stage Xenopus embryos indicated that it was able to neutralize effectively the bioactivity of TGF-beta in vivo.

Not tested in other applications.

Product Note

Western blotting demonstrated that this antibody reacts with the dimeric (25 Kd) and monomeric (12.5 kDa.) forms of TGF-beta under both non-reducing and reducing conditions respectively.

Properties

Form	Liquid
Buffer	PBS
Preservative	No preservatives
Storage	Store as concentrated solution. Centrifuge briefly prior to opening vial. For short-term storage (1-2 weeks), store at 4°C. For long-term storage, aliquot and store at -20°C or below. Avoid multiple freeze-thaw cycles.

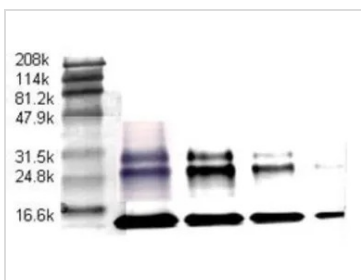


For full product information, images and publications, please visit our [website](#).

Date 2026 / 04 / 03 Page 1 of 2

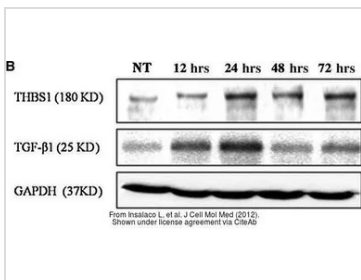
Concentration	1 mg/ml (Please refer to the vial label for the specific concentration.)
Immunogen	TGF-beta 1 from human platelets
Purification	IgG fraction Protein G purified.
Conjugation	Unconjugated
Note	For laboratory research use only. Not for any clinical, therapeutic, or diagnostic use in humans or animals. Not for animal or human consumption. Purchasers shall not, and agree not to enable third parties to, analyze, copy, reverse engineer or otherwise attempt to determine the structure or sequence of the product.

DATA IMAGES



GTx21279 WB Image

WB analysis of platelet derived TGF beta at 12mg/lane (lane 2), 6mg/lane (lane 3), 3mg/lane (lane 4) and 1mg/mL (lane 5) with 4-chlorol-naphthol as substrate using TGF beta antibody [TB21] at a dilution of 2mg/ml. Lane 1 is molecular weight markers.



GTx21279 WB Image

The data was published in the journal J Cell Mol Med in 2012. [PMID: 22260151](https://pubmed.ncbi.nlm.nih.gov/22260151/)



For full product information, images and publications, please visit our [website](http://www.genetex.com).