

## Aurora A antibody

Cat. No. GTX21287

Host	Rabbit
Clonality	Polyclonal
Isotype	IgG
Application	IHC-P, IP
Reactivity	Human

Reference ( 1 )

Package

50 µg

## APPLICATION

## Application Note

\*Optimal dilutions/concentrations should be determined by the researcher.

Suggested dilution	Recommended dilution
IHC-P	Assay dependent
IP	2-10µg antibody/mg lysate

Not tested in other applications.

**Calculated MW** 46 kDa. ( [Note](#) )

**Product Note** The epitope maps to a region between residues 50-100 of human Aurora kinase A.

## PROPERTIES

Form	Liquid
Buffer	Tris-Citrate/Phosphate
Preservative	0.09% Sodium azide
Storage	Store as concentrated solution. Centrifuge briefly prior to opening vial. Store at 4°C.
Concentration	Batch dependent (Please refer to the vial label for the specific concentration.)
Immunogen	Synthetic peptide representing a portion of the protein encoded within exon 5.
Purification	Purified by antigen-affinity chromatography
Conjugation	Unconjugated

## Note

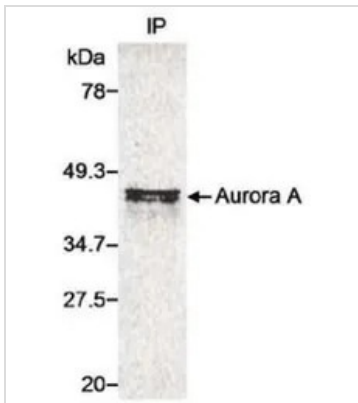
For laboratory research use only. Not for any clinical, therapeutic, or diagnostic use in humans or animals. Not for animal or human consumption.

Purchasers shall not, and agree not to enable third parties to, analyze, copy, reverse engineer or otherwise attempt to determine the structure or sequence of the product.



For full product information, images and publications, please visit our [website](#).

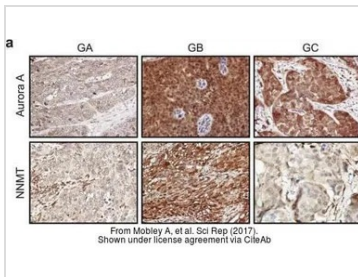
## DATA IMAGES



### GTX21287 IP Image

IP analysis of 35S-Met-labeled whole cell lysate transfected with a human Aurora A expression construct using GTX21287 Aurora A antibody.

IP reaction : 2-10µg/mg lysate



### GTX21287 IHC-P Image

The data was published in the journal Sci Rep in 2017. [PMID: 28102366](https://pubmed.ncbi.nlm.nih.gov/28102366/)



For full product information, images and publications, please visit our [website](https://www.genetex.com).