

## CD20 antibody, C-term

Cat. No. GTX21310

|              |            |
|--------------|------------|
| Host         | Goat       |
| Clonality    | Polyclonal |
| Isotype      | IgG        |
| Applications | WB, IHC-P  |
| Reactivity   | Human      |

References ( 1 )

Package

100 µg

## Applications

## Application Note

\*Optimal dilutions/concentrations should be determined by the researcher.

| Suggested dilution | Recommended dilution |
|--------------------|----------------------|
| WB                 | 0.03-0.1µg/ml        |
| IHC-P              | 2-4µg/ml             |

**Note : Human Tonsil shows membranous staining mainly in the Germinal Center.**

Not tested in other applications.

**Calculated MW** 33 kDa. ( [Note](#) )

## Properties

|               |  |
|---------------|--|
| Form          | Liquid   |
| Buffer        | TBS, 0.5% BSA  |
| Preservative  | 0.02% Sodium azide   |
| Storage       | Store as concentrated solution. Centrifuge briefly prior to opening vial. For short-term storage (1-2 weeks), store at 4°C. For long-term storage, aliquot and store at -20°C or below. Avoid multiple freeze-thaw cycles. |
| Concentration | 0.50 mg/ml (Please refer to the vial label for the specific concentration.)  |
| Immunogen     | Peptide with sequence CQDQESSPIENDSSP, from the C Terminus of the protein sequence according to NP_068769.2; NP_690605.1.  |
| Purification  | Purified by ammonium sulphate precipitation followed by antigen affinity chromatography  |
| Conjugation   | Unconjugated   |

## Note

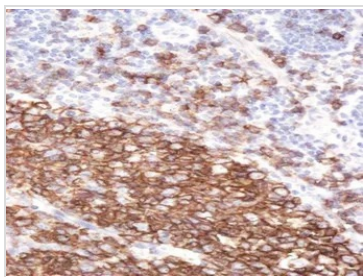
For laboratory research use only. Not for any clinical, therapeutic, or diagnostic use in humans or animals. Not for animal or human consumption.

Purchasers shall not, and agree not to enable third parties to, analyze, copy, reverse engineer or otherwise attempt to determine the structure or sequence of the product.



For full product information, images and publications, please visit our [website](#).

## DATA IMAGES

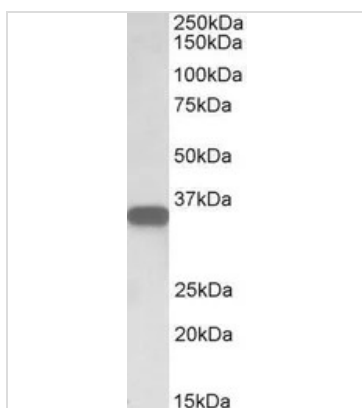


### GTX21310 IHC-P Image

IHC-P analysis of human tonsil using GTX21310 CD20 antibody, C-term.

Antigen retrieval : citrate buffer pH 6

Dilution : 2µg/ml



### GTX21310 WB Image

WB analysis of human lymph node lysate using GTX21310 CD20 antibody, C-term.

Dilution : 0.05µg/ml

Loading : 35µg protein in RIPA buffer



For full product information, images and publications, please visit our [website](#).