

## Goat Anti-Rabbit IgG antibody (DyLight488)

**Cat. No. GTX213110-04**

<b>Host</b>	Goat
<b>Clonality</b>	Polyclonal
<b>Isotype</b>	IgG
<b>Applications</b>	WB, ICC/IF, IHC-P, IHC-Fr, IHC-Wm, FCM
<b>Reactivity</b>	Rabbit

References ( 31 )

Package

500 µl

## Applications

**Application Note**

\*Optimal dilutions/concentrations should be determined by the researcher.

Suggested dilution	Recommended dilution
WB	Assay dependent
ICC/IF	1:100-1:2000
IHC-P	1:100-1:1000
IHC-Fr	1:100-1:1000
IHC-Wm	1:100-1:500
FCM	1:50-1:1000

Not tested in other applications.

## Properties

<b>Form</b>	Liquid
<b>Buffer</b>	PBS
<b>Preservative</b>	No preservative
<b>Storage</b>	Store as concentrated solution. Centrifuge briefly prior to opening vial. For short-term storage (1-2 weeks), store at 4°C. For long-term storage, aliquot and store at -20°C or below. Avoid multiple freeze-thaw cycles. Protect from light.
<b>Concentration</b>	2 mg/ml (Please refer to the vial label for the specific concentration.)
<b>Immunogen</b>	Highly purified whole rabbit IgG
<b>Purification</b>	Purified by antigen-affinity chromatography.
<b>Conjugation</b>	DyLight488 <a href="#">Wavelength</a>



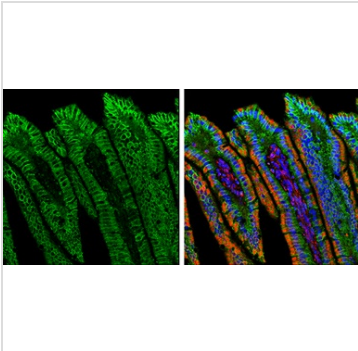
For full product information, images and publications, please visit our [website](#).

For laboratory research use only. Not for any clinical, therapeutic, or diagnostic use in humans or animals. Not for animal or human consumption.

#### Note

Purchasers shall not, and agree not to enable third parties to, analyze, copy, reverse engineer or otherwise attempt to determine the structure or sequence of the product.

#### DATA IMAGES



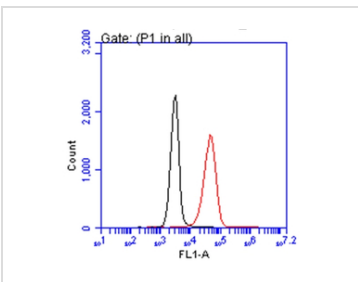
#### GTX213110-04 IHC-P Image

Double-labeled immunofluorescence photomicrographs of paraffin-embedded sections of mouse colon. Green: E-Cadherin antibody (GTX100443) diluted at 1:500. The signal was developed using goat anti-rabbit IgG antibody (Dylight488) (GTX213110-04).

Red: alpha Tubulin antibody [GT114] (GTX628802) diluted at 1:500. The signal was developed using goat anti-mouse IgG antibody (Dylight594) (GTX213111-05).

Blue: Fluoroshield with DAPI (GTX30920).

Antigen Retrieval: Citrate buffer, pH 6.0, 15 min



#### GTX213110-04 FCM Image

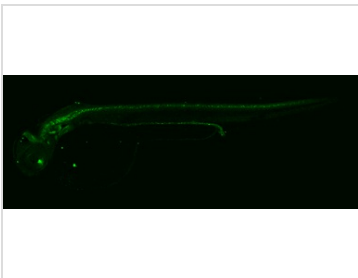
Glypican 1 antibody [N3C3] (GTX104557) detects Glypican 1 protein by flow cytometry analysis.

Sample: A431 cell.

Black: Unlabelled sample was used as a control.

Red: Glypican 1 antibody [N3C3] (GTX104557) dilution: 1:50.

Acquisition of 20,000 events were collected using the Rabbit IgG (DyLight488) (GTX113110-04) secondary antibody for FACS analysis.

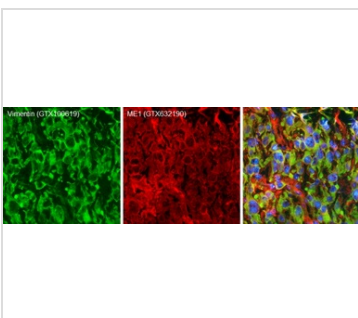


#### GTX213110-04 IHC-Wm Image

Whole mount immunohistochemical analysis of paraformaldehyde-fixed 2 day-post-fertilization zebrafish embryo using Pax2a antibody (GTX128127) detected by anti-rabbit IgG antibody (Dylight488) (GTX213110-04).

GTX128127 diluted at 1:100 and incubated overnight at 4°C.

GTX213110-04 diluted at 1:500 and incubated 3 hours at room temperature.



#### GTX213110-04 IHC-Fr Image

Double-labeled immunofluorescence photomicrographs of frozen sections of mouse brain.

Green: Vimentin antibody (GTX100619) diluted at 1:200. The signal was developed using goat anti-rabbit IgG antibody (Dylight488) (GTX213110-04).

Red: ME1 antibody [GT15611] (GTX632190) diluted at 1:200. The signal was developed using goat anti-mouse IgG antibody (Dylight594) (GTX213111-05).

Blue: Nuclear staining with Hoechst 33342.



For full product information, images and publications, please visit our [website](#).