

Goat Anti-Rabbit IgG antibody (DyLight594)

Cat. No. GTX213110-05

Host	Goat
Clonality	Polyclonal
Isotype	IgG
Applications	WB, ICC/IF, IHC-P, IHC-Fr, FCM
Reactivity	Rabbit

References (19)

Package

500 µl

Applications

Application Note

*Optimal dilutions/concentrations should be determined by the researcher.

Suggested dilution	Recommended dilution
WB	Assay dependent
ICC/IF	1:100-1:2000
IHC-P	Assay dependent
IHC-Fr	1:100-1:1000
FCM	1:50-1:200

Not tested in other applications.

Properties

Form	Liquid
Buffer	PBS
Preservative	No preservative
Storage	Store as concentrated solution. Centrifuge briefly prior to opening vial. For short-term storage (1-2 weeks), store at 4°C. For long-term storage, aliquot and store at -20°C or below. Avoid multiple freeze-thaw cycles. Protect from light.
Concentration	2 mg/ml (Please refer to the vial label for the specific concentration.)
Immunogen	Highly purified whole rabbit IgG
Purification	Purified by antigen-affinity chromatography.
Conjugation	DyLight594 Wavelength

Note

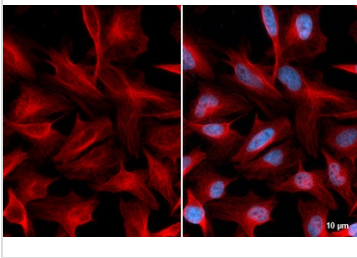
For laboratory research use only. Not for any clinical, therapeutic, or diagnostic use in humans or animals. Not for animal or human consumption.

Purchasers shall not, and agree not to enable third parties to, analyze, copy, reverse engineer or otherwise attempt to determine the structure or sequence of the product.



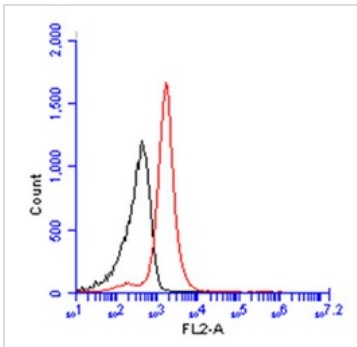
For full product information, images and publications, please visit our [website](#).

DATA IMAGES



GTX213110-05 ICC/IF Image

beta Tubulin antibody detects beta Tubulin protein at cytoskeleton by immunofluorescent analysis. Sample: HeLa cells were fixed in 4% paraformaldehyde at RT for 15 min. Red: beta Tubulin stained by beta Tubulin antibody (GTX101279) diluted at 1:100. The signal was developed using Goat Anti-Rabbit IgG antibody (DyLight594) (GTX213110-05) diluted at 1:500. Blue: Fluoroshield with DAPI (GTX30920).



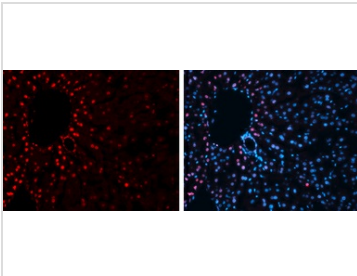
GTX213110-05 FCM Image

BrdU antibody (GTX128091) detects BrdU protein from HeLa treated with 10 µM BrdU for 30 minutes and fixed in 4% paraformaldehyde at 4°C for 15 minutes by flow cytometry analysis.

Black: Unlabelled sample was used as a control.

Red: BrdU antibody (GTX128091) dilution: 1:50.

The Rabbit IgG antibody (DyLight594) (GTX213110-05) was used to detect the primary antibody.



GTX213110-05 IHC-Fr Image

Immunofluorescence photomicrographs of frozen sections of mouse liver.

Red: Histone H3K27me3 (trimethyl Lys27) antibody (GTX121184) diluted at 1:200. The signal was developed using goat anti-rabbit IgG antibody (DyLight594) (GTX213110-05).

Blue: Nuclear staining with Hoechst 33342.



For full product information, images and publications, please visit our [website](https://www.genetex.com).