

Goat Anti-Mouse IgG antibody (HRP)

Cat. No. GTX213111-01

Host	Goat
Clonality	Polyclonal
Isotype	IgG
Application	WB, IHC-P, ELISA, IHC
Reactivity	Mouse

Reference ([356](#))

Package

1 ml

APPLICATION

Application Note

*Optimal dilutions/concentrations should be determined by the researcher.

Suggested dilution	Recommended dilution
WB	Assay dependent
IHC-P	1:100-1:1000
ELISA	Assay dependent
IHC	Assay dependent

Not tested in other applications.

PROPERTIES

Form	Liquid
Buffer	0.05M Tris, 0.15M NaCl, 1%BSA
Preservative	0.025% ProClin 300
Storage	Store as concentrated solution. Centrifuge briefly prior to opening vial. For short-term storage (1-2 weeks), store at 4°C. For long-term storage, aliquot and store at -20°C or below. Avoid multiple freeze-thaw cycles.
Concentration	0.25 mg/ml (Please refer to the vial label for the specific concentration.)
Immunogen	Highly purified whole mouse IgG
Purification	Purified by antigen-affinity chromatography.
Conjugation	Horseradish peroxidase(HRP)

Note

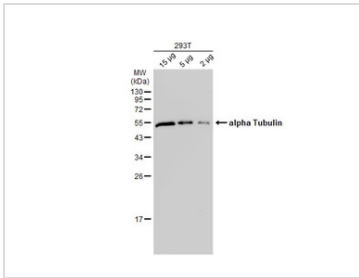
For laboratory research use only. Not for any clinical, therapeutic, or diagnostic use in humans or animals. Not for animal or human consumption.

Purchasers shall not, and agree not to enable third parties to, analyze, copy, reverse engineer or otherwise attempt to determine the structure or sequence of the product.



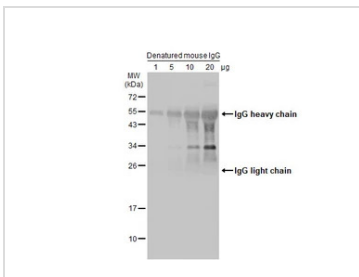
For full product information, images and publications, please visit our [website](#).

DATA IMAGES



GTX213111-01 WB Image

Various whole cell extracts were separated by 12% SDS-PAGE, and the membrane was blotted with alpha Tubulin antibody [GT114] (GTX628802) diluted at 1:10000. The HRP-conjugated anti-mouse IgG antibody (GTX213111-01) was used to detect the primary antibody.



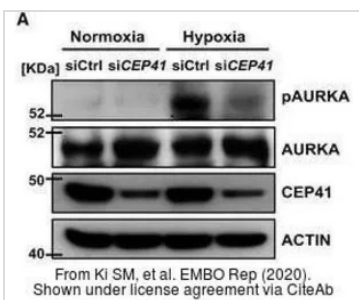
GTX213111-01 WB Image

Various amounts of denatured mouse IgG protein were separated by 12% SDS-PAGE, and the membrane was blotted with HRP-conjugated anti-rabbit IgG antibody (GTX213110-01) diluted at 1:5000.



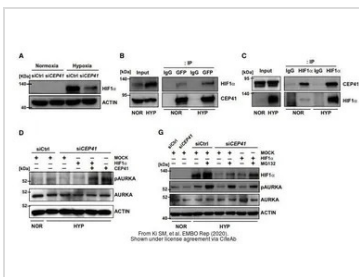
GTX213111-01 IHC-P Image

E2F1 antibody [16G7] detects E2F1 protein at nucleus in mouse cervix by immunohistochemical analysis. Sample: Paraffin-embedded mouse cervix. E2F1 antibody [16G7] (GTX70163) diluted at 1:500. The signal was developed by Mouse IgG antibody (HRP) (GTX213111-01). Antigen Retrieval: Citrate buffer, pH 6.0, 15 min



GTX213111-01 WB Image

The data was published in the journal EMBO Rep in 2020. [PMID: 31885126](https://pubmed.ncbi.nlm.nih.gov/31885126/)



GTX213111-01 WB Image

The data was published in the journal EMBO Rep in 2020. [PMID: 31885126](https://pubmed.ncbi.nlm.nih.gov/31885126/)



For full product information, images and publications, please visit our [website](https://www.genetex.com).