

Goat Anti-Mouse IgG antibody (HRP)

Cat. No. GTX213111-01

| | |
|--------------|-----------------------|
| Host | Goat |
| Clonality | Polyclonal |
| Isotype | IgG |
| Applications | WB, IHC-P, ELISA, IHC |
| Reactivity | Mouse |

References (392)

Package

1 ml

Applications

Application Note

*Optimal dilutions/concentrations should be determined by the researcher.

| Suggested dilution | Recommended dilution |
|--------------------|----------------------|
| WB | Assay dependent |
| IHC-P | 1:100-1:1000 |
| ELISA | Assay dependent |
| IHC | Assay dependent |

Not tested in other applications.

Properties

| | |
|---------------|----------------------------------------------------------------------------------------------------------------------------------------------------------------------------------------------------------------------------|
| Form | Liquid |
| Buffer | 0.05M Tris, 0.15M NaCl, 1%BSA |
| Preservative | 0.025% ProClin 300 |
| Storage | Store as concentrated solution. Centrifuge briefly prior to opening vial. For short-term storage (1-2 weeks), store at 4°C. For long-term storage, aliquot and store at -20°C or below. Avoid multiple freeze-thaw cycles. |
| Concentration | 0.25 mg/ml (Please refer to the vial label for the specific concentration.) |
| Immunogen | Highly purified whole mouse IgG |
| Purification | Purified by antigen-affinity chromatography. |
| Conjugation | Horseradish peroxidase(HRP) |

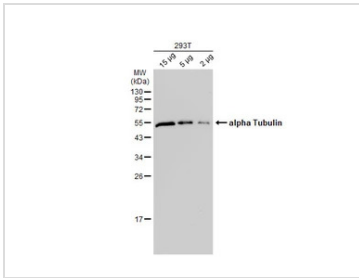
Note

For laboratory research use only. Not for any clinical, therapeutic, or diagnostic use in humans or animals. Not for animal or human consumption.

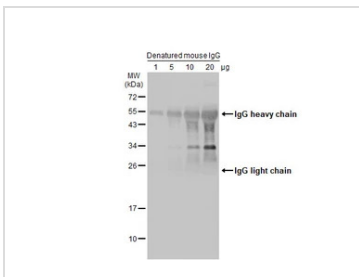
Purchasers shall not, and agree not to enable third parties to, analyze, copy, reverse engineer or otherwise attempt to determine the structure or sequence of the product.



For full product information, images and publications, please visit our [website](#).

DATA IMAGES

GTX213111-01 WB Image

Various whole cell extracts were separated by 12% SDS-PAGE, and the membrane was blotted with alpha Tubulin antibody [GT114] (GTX628802) diluted at 1:10000. The HRP-conjugated anti-mouse IgG antibody (GTX213111-01) was used to detect the primary antibody.


GTX213111-01 WB Image

Various amounts of denatured mouse IgG protein were separated by 12% SDS-PAGE, and the membrane was blotted with HRP-conjugated anti-rabbit IgG antibody (GTX213110-01) diluted at 1:5000.


GTX213111-01 IHC-P Image

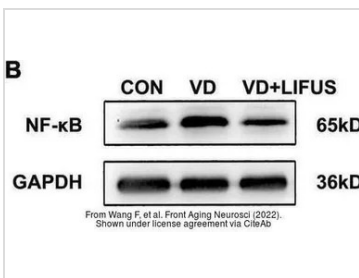
E2F1 antibody [16G7] detects E2F1 protein at nucleus in mouse cervix by immunohistochemical analysis.

Sample: Paraffin-embedded mouse cervix.

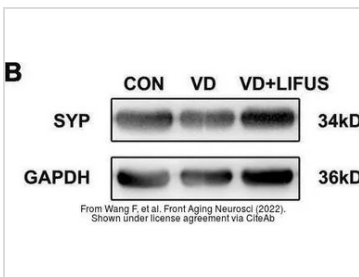
E2F1 antibody [16G7] (GTX70163) diluted at 1:500.

The signal was developed by Mouse IgG antibody (HRP) (GTX213111-01).

Antigen Retrieval: Citrate buffer, pH 6.0, 15 min


GTX213111-01 WB Image

The data was published in the 2022 in Front Aging Neurosci. [PMID: 35264943](https://doi.org/10.3389/fnagi.2022.852649)


GTX213111-01 WB Image

The data was published in the 2022 in Front Aging Neurosci. [PMID: 35264943](https://doi.org/10.3389/fnagi.2022.852649)



For full product information, images and publications, please visit our [website](https://www.genetex.com).