

## Rabbit Anti-Mouse IgG antibody (HRP)

Cat. No. GTX213112-01

<b>Host</b>	Rabbit
<b>Clonality</b>	Polyclonal
<b>Isotype</b>	IgG
<b>Applications</b>	WB, ELISA
<b>Reactivity</b>	Mouse

References ( 27 )  
 Package  
 1 ml

## Applications

## Application Note

\*Optimal dilutions/concentrations should be determined by the researcher.

Suggested dilution	Recommended dilution
WB	1:5000-1:10000
ELISA	Assay dependent

Not tested in other applications.

## Properties

<b>Form</b>	Liquid
<b>Buffer</b>	0.05M Tris, 0.15M NaCl, 1%BSA
<b>Preservative</b>	0.025% ProClin 300
<b>Storage</b>	Store as concentrated solution. Centrifuge briefly prior to opening vial. For short-term storage (1-2 weeks), store at 4°C. For long-term storage, aliquot and store at -20°C or below. Avoid multiple freeze-thaw cycles.
<b>Concentration</b>	0.48 mg/ml (Please refer to the vial label for the specific concentration.)
<b>Immunogen</b>	Highly purified whole mouse IgG
<b>Purification</b>	Purified by antigen-affinity chromatography. Affinity Purified IgG
<b>Conjugation</b>	Horseradish peroxidase(HRP)

## Note

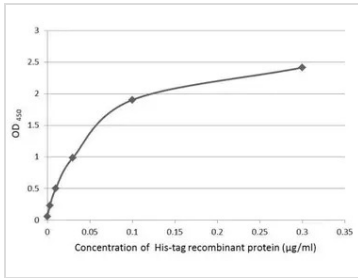
For laboratory research use only. Not for any clinical, therapeutic, or diagnostic use in humans or animals. Not for animal or human consumption.

Purchasers shall not, and agree not to enable third parties to, analyze, copy, reverse engineer or otherwise attempt to determine the structure or sequence of the product.



For full product information, images and publications, please visit our [website](#).

## DATA IMAGES

**GTX213112-01 ELISA Image**

An ELISA plate is coated with 50 µL of a 6x-His recombinant protein conjugated BSA at concentration ranged from 0.003 µg/mL to 3 µg/mL. The coated protein is detected with anti-His antibody (GTX628921) at 0.5 ng/mL. Bound antibodies were further detected by using HRP-conjugated goat anti-mouse IgG (GTX213112-01).



For full product information, images and publications, please visit our [website](#).