

## VEGFA antibody [VG1]

Cat. No. GTX21316

Host	Mouse
Clonality	Monoclonal
Isotype	IgG1
Application	WB, ICC/IF, IHC-P, IHC-Fr, FACS, ELISA
Reactivity	Human, Mouse, Rat, Zebrafish, Dog

Reference ( 18 )  
Package  
250 µl

## APPLICATION

## Application Note

\*Optimal dilutions/concentrations should be determined by the researcher.

Suggested dilution	Recommended dilution
WB	Assay dependent
ICC/IF	Assay dependent
IHC-P	1:20-1:40
IHC-Fr	Assay dependent
FACS	Assay dependent
ELISA	Assay dependent

**Note : Recommendations for antigen retrieval : EDTA buffer pH 8.0 at room temperature for 30 mins.**

Not tested in other applications.

**Calculated MW** 27 kDa. ( [Note](#) )

**Product Note** This antibody is specific to a cluster of proteins between 19-22 kDa (reduced).

## PROPERTIES

Form	Liquid
Buffer	Ascites
Preservative	0.09% Sodium azide
Storage	Store as concentrated solution. Centrifuge briefly prior to opening vial. Store at 4°C.
Immunogen	BALB/C mice were injected with a recombinant VEGF protein.
Purification	Unpurified
Conjugation	Unconjugated

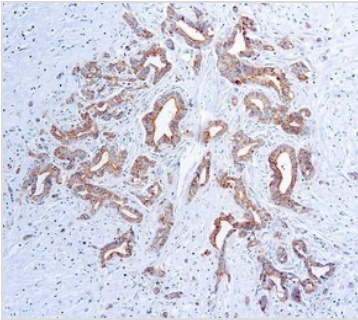


For full product information, images and publications, please visit our [website](#).

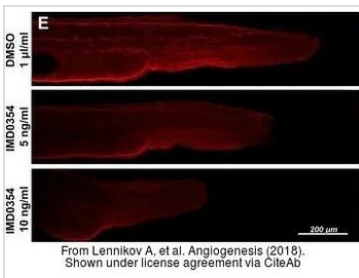
For laboratory research use only. Not for any clinical, therapeutic, or diagnostic use in humans or animals. Not for animal or human consumption.

**Note**

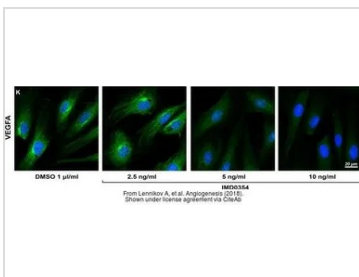
Purchasers shall not, and agree not to enable third parties to, analyze, copy, reverse engineer or otherwise attempt to determine the structure or sequence of the product.

**DATA IMAGES**

**GTx21316 IHC-P Image**

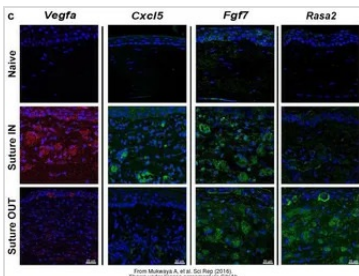
IHC-P analysis of human angiosarcoma tissue using GTx21316 VEGFA antibody [VG1].


**GTx21316 ICC/IF Image**

The data was published in the journal Angiogenesis in 2018. [PMID: 29332242](https://pubmed.ncbi.nlm.nih.gov/29332242/)


**GTx21316 ICC/IF Image**

The data was published in the journal Angiogenesis in 2018. [PMID: 29332242](https://pubmed.ncbi.nlm.nih.gov/29332242/)


**GTx21316 IHC-P Image**

The data was published in the journal Sci Rep in 2016. [PMID: 27561355](https://pubmed.ncbi.nlm.nih.gov/27561355/)



For full product information, images and publications, please visit our [website](https://www.genetex.com).