

alpha Sarcomeric Actin antibody [5C5] (ready-to-use)

Cat. No. GTX21321

Host	Mouse
Clonality	Monoclonal
Isotype	IgM
Applications	IHC-P
Reactivity	Human

References (1)
Package
6 ml

Applications

Application Note

*Optimal dilutions/concentrations should be determined by the researcher.

Suggested dilution	Recommended dilution
IHC-P	Assay dependent

Not tested in other applications.

Product Note This antibody is specific to α -skeletal and α -cardiac muscle actins. It does not react with smooth muscle tissue.

Properties

Form	Liquid
Buffer	Ascites
Preservative	0.09% Sodium azide
Storage	Store as concentrated solution. Centrifuge briefly prior to opening vial. Store at 4°C.
Immunogen	BALB/C mice were injected with purified rabbit striated muscle actin.
Purification	Unpurified
Conjugation	Unconjugated

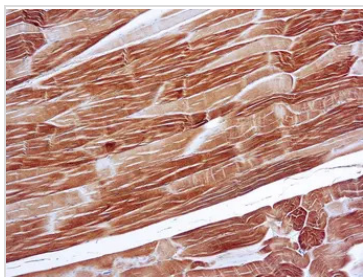
Note For laboratory research use only. Not for any clinical, therapeutic, or diagnostic use in humans or animals. Not for animal or human consumption.

Purchasers shall not, and agree not to enable third parties to, analyze, copy, reverse engineer or otherwise attempt to determine the structure or sequence of the product.



For full product information, images and publications, please visit our [website](#).

DATA IMAGES



GTX21321 IHC-P Image

IHC-P analysis of human skeletal muscle tissue using GTX21321 alpha Sarcomeric Actin antibody [5C5] (ready-to-use).



For full product information, images and publications, please visit our [website](#).