

ESE1 antibody

Cat. No. GTX21392

Host	Rabbit
Clonality	Polyclonal
Isotype	IgG
Applications	WB, ELISA
Reactivity	Human

Package
50 µg

Applications

Application Note

Immunoblotting: use at 1:500-1:1,000 dilution. ELISA: use at 1:1,000-1:5,000 dilution

Calculated MW	41 kDa. (Note)
Product Note	This antibody recognizes human ESE-1 (39-41 kD).

Properties

Form	Liquid
Buffer	PBS
Preservative	0.02% Sodium azide
Storage	Store as concentrated solution. Centrifuge briefly prior to opening vial. For short-term storage (1-2 weeks), store at 4°C. For long-term storage, aliquot and store at -20°C or below. Avoid multiple freeze-thaw cycles.
Concentration	1 mg/ml (Please refer to the vial label for the specific concentration.)
Immunogen	N-terminal sequence MAATCEISNIFSNYFS and C-terminal sequence SSGWKEEVLQSRN of human ESE-1 protein.
Purification	Protein G purified
Conjugation	Unconjugated

Note

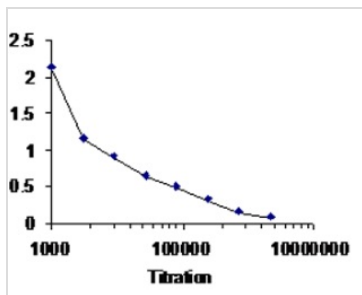
For laboratory research use only. Not for any clinical, therapeutic, or diagnostic use in humans or animals. Not for animal or human consumption.

Purchasers shall not, and agree not to enable third parties to, analyze, copy, reverse engineer or otherwise attempt to determine the structure or sequence of the product.



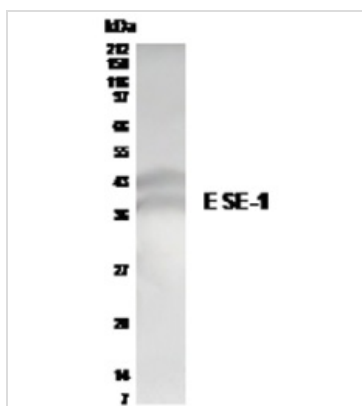
For full product information, images and publications, please visit our [website](#).

DATA IMAGES



GTx21392 ELISA Image

ELISA of ESE-1 using GTx21392 as the capture antibody.



GTx21392 WB Image

Western blot analysis of ESE-1 in T84 colon carcinoma cells with anti-E SE-1 at a 1:500 dilution. Recognizes both isoforms of ESE-1



For full product information, images and publications, please visit our [website](#).