

# HeLa cell lysate, Nuclear Fraction

**Cat. No. GTX21405**

**Species** Human

**Package**  
200 µg

## PRODUCT

**Summary** HeLa Nuclear Extracts were prepared as detailed in Dignam et al. Briefly cells were harvested in exponential phase and homogenated, with subsequent low speed centrifugation.

## PROPERTIES

**Form** Liquid

**Buffer** 2X LDS sample buffer

**Preservative** No Preservative

**Storage** Store as concentrated solution. Centrifuge briefly prior to opening vial. Aliquot and store at -20°C or below. Avoid multiple freeze-thaw cycles.

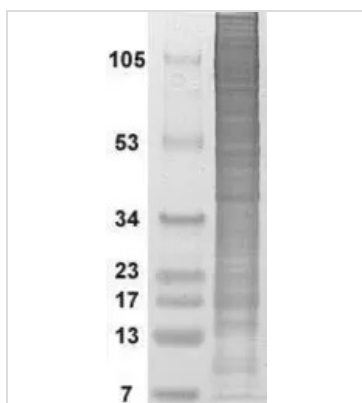
**Concentration** 4.25 mg/ml (Please refer to the vial label for the specific concentration.)

**Purification** HeLa Nuclear Extracts were prepared as detailed in Dignam et al. Briefly cells were harvested in exponential phase and homogenated, with subsequent low speed centrifugation. The resultant pellet was centrifuged for 20 min at 25,000 g, to remove residual c

**Note** For laboratory research use only. Not for any clinical, therapeutic, or diagnostic use in humans or animals. Not for animal or human consumption.

Purchasers shall not, and agree not to enable third parties to, analyze, copy, reverse engineer or otherwise attempt to determine the structure or sequence of the product.

## DATA IMAGES



**GTX21405 Image**



For full product information, images and publications, please visit our [website](https://www.genetex.com).