

CD55 antibody [MEM-118]

Cat. No. GTX21422

Host	Mouse
Clonality	Monoclonal
Isotype	IgM
Applications	IHC-P, FCM, IP
Reactivity	Human, Primate

Package
100 µg

Applications

Application Note

*Optimal dilutions/concentrations should be determined by the researcher.

Suggested dilution	Recommended dilution
IHC-P	Assay dependent
FCM	Assay dependent
IP	Assay dependent

Not tested in other applications.

Product Note This antibody recognizes an epitope in SCR4 domain of CD55 (Decay accelerating factor, DAF).

Properties

Form	Liquid
Buffer	TBS
Preservative	15mM Sodium azide
Storage	Store as concentrated solution. Centrifuge briefly prior to opening vial. Store at 4°C. DO NOT FREEZE.
Concentration	1 mg/ml (Please refer to the vial label for the specific concentration.)
Immunogen	HPB-ALL human T cell line
Purification	Purified by precipitation and chromatography
Conjugation	Unconjugated

Note

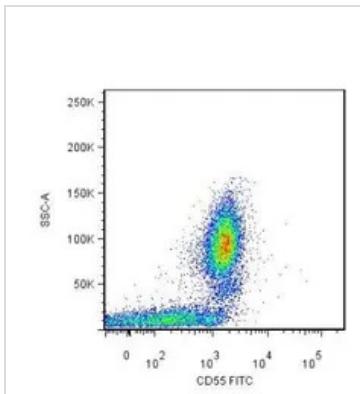
For laboratory research use only. Not for any clinical, therapeutic, or diagnostic use in humans or animals. Not for animal or human consumption.

Purchasers shall not, and agree not to enable third parties to, analyze, copy, reverse engineer or otherwise attempt to determine the structure or sequence of the product.



For full product information, images and publications, please visit our [website](#).

DATA IMAGES

**GTX21422 FCM Image**

Surface staining of human peripheral blood leukocytes by mouse monoclonal anti-CD55 antibody (GTX21422)



For full product information, images and publications, please visit our [website](#).