

p53 (phospho Ser15) antibody

Cat. No. GTX21431

Host	Rabbit
Clonality	Polyclonal
Isotype	IgG
Applications	WB, ICC/IF, IHC-P, IP, ELISA, IHC
Reactivity	Human, Mouse, Rat

References (7)

Package

50 µg

Applications

Application Note

*Optimal dilutions/concentrations should be determined by the researcher.

Suggested dilution	Recommended dilution
WB	Assay dependent
ICC/IF	Assay dependent
IHC-P	Assay dependent
IP	Assay dependent
ELISA	Assay dependent
IHC	Assay dependent

Not tested in other applications.

Calculated MW 44 kDa. ([Note](#))

Product Note The phospho-p53 (Ser15) antibody detects ~53 kDa phosphorylated p53 at Ser15. It does not react with non-phosphorylated p53 or p53 phosphorylated at other sites.

Properties

Form	Liquid
Buffer	PBS, 0.5% BSA, 30% Glycerol
Preservative	0.01% Thimerosal
Storage	Store as concentrated solution. Centrifuge briefly prior to opening vial. For short-term storage (1-2 weeks), store at 4°C. For long-term storage, aliquot and store at -20°C or below. Avoid multiple freeze-thaw cycles.
Concentration	0.5 mg/ml (Please refer to the vial label for the specific concentration.)
Immunogen	Synthetic phospho-peptide surrounding amino acid Ser 15 of human p53.
Conjugation	Unconjugated



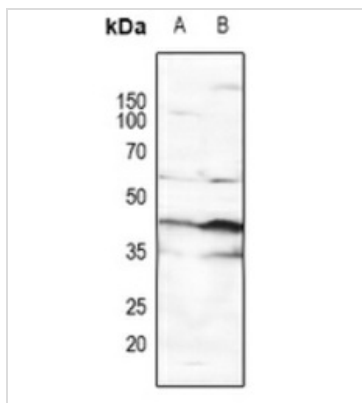
For full product information, images and publications, please visit our [website](#).

For laboratory research use only. Not for any clinical, therapeutic, or diagnostic use in humans or animals. Not for animal or human consumption.

Note

Purchasers shall not, and agree not to enable third parties to, analyze, copy, reverse engineer or otherwise attempt to determine the structure or sequence of the product.

DATA IMAGES

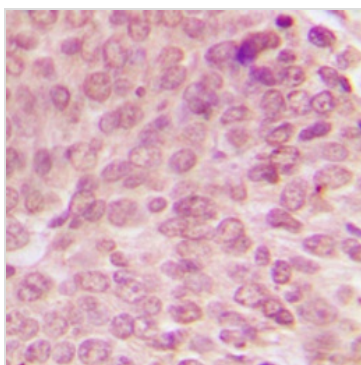


GTx21431 WB Image

WB analysis of various samples using GTx21431 p53 (phospho Ser15) antibody.

Lane 1 : HeLa whole cell lysate

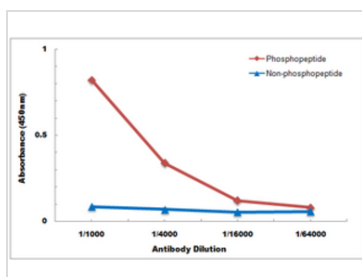
Lane 2 : Jurkat whole cell lysate



GTx21431 IHC-P Image

IHC-P analysis of human breast cancer using GTx21431 p53 (phospho Ser15) antibody.

Antigen retrieval : Heat mediated antigen retrieval with sodium citrate buffer (pH 6.0).



GTx21431 ELISA Image

ELISA analysis of phospho- and non phospho- peptide using GTx21431 p53 (phospho Ser15) antibody.

Red : Phosphopeptide

Blue :Non-phosphopeptide

Dilution : 5 µg/ml



For full product information, images and publications, please visit our [website](https://www.genetex.com).