

TLR2 antibody

Cat. No. GTX21655

Host	Goat
Clonality	Polyclonal
Isotype	IgG
Applications	ELISA, IHC
Reactivity	Human, Mouse

References (1)

Package

100 µg

Applications

Application Note

*Optimal dilutions/concentrations should be determined by the researcher.

Suggested dilution	Recommended dilution
ELISA	1:37,500
IHC	1:125

Not tested in other applications.

Product Note Peptide sequence is < 50 % identical to other human TLR receptors in this region.

Properties

Form	Liquid
Buffer	10mM KHPO ₄ , 140mM NaCl, 0.1% BSA
Preservative	0.1% Sodium azide
Storage	Store as concentrated solution. Centrifuge briefly prior to opening vial. For short-term storage (1-2 weeks), store at 4°C. For long-term storage, aliquot and store at -20°C or below. Avoid multiple freeze-thaw cycles.
Concentration	1 mg/ml (Please refer to the vial label for the specific concentration.)
Immunogen	Synthetic peptide C-LEIDASDLQSYEPKSLKSIQNVSHLI corresponding to amino acids 179-204 of human TLR2
Purification	Purified by affinity chromatography
Conjugation	Unconjugated

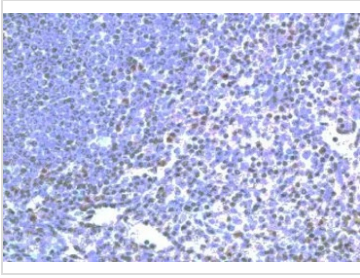
Note

For laboratory research use only. Not for any clinical, therapeutic, or diagnostic use in humans or animals. Not for animal or human consumption.

Purchasers shall not, and agree not to enable third parties to, analyze, copy, reverse engineer or otherwise attempt to determine the structure or sequence of the product.



For full product information, images and publications, please visit our [website](#).

DATA IMAGES

GTX21655 IHC Image

IHC analysis of human spleen tissue using GTX21655 TLR2 antibody.



For full product information, images and publications, please visit our [website](#).