

## CCR6 antibody

**Cat. No. GTX21659**

<b>Host</b>	Goat
<b>Clonality</b>	Polyclonal
<b>Isotype</b>	IgG
<b>Applications</b>	WB, FCM, ELISA, IHC
<b>Reactivity</b>	Human

**Package**  
100 µg

## Applications

**Application Note**

\*Optimal dilutions/concentrations should be determined by the researcher.

Suggested dilution	Recommended dilution
WB	1:250
FCM	2-6µl/10 <sup>6</sup> cells/50-100µl
ELISA	1:37,500
IHC	1:125

Not tested in other applications.

**Calculated MW** 42 kDa. ( [Note](#) )

**Product Note** Peptide sequence is <50% identical to other human chemokine receptors in this region.

## Properties

<b>Form</b>	Liquid
<b>Buffer</b>	10mM KHPO <sub>4</sub> , 140mM NaCl, 0.1% BSA
<b>Preservative</b>	0.1% Sodium azide
<b>Storage</b>	Store as concentrated solution. Centrifuge briefly prior to opening vial. For short-term storage (1-2 weeks), store at 4°C. For long-term storage, aliquot and store at -20°C or below. Avoid multiple freeze-thaw cycles.
<b>Concentration</b>	Batch dependent (Please refer to the vial label for the specific concentration.)
<b>Immunogen</b>	Synthetic peptide YFVSVNTSYYSVDSEMLLCSLQEVQRQFSR to amino acid residues 18 - 46 of human CCR6
<b>Purification</b>	Purified by affinity chromatography
<b>Conjugation</b>	Unconjugated



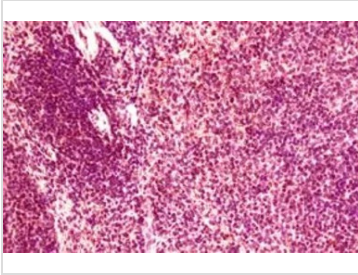
For full product information, images and publications, please visit our [website](#).

For laboratory research use only. Not for any clinical, therapeutic, or diagnostic use in humans or animals. Not for animal or human consumption.

**Note**

Purchasers shall not, and agree not to enable third parties to, analyze, copy, reverse engineer or otherwise attempt to determine the structure or sequence of the product.

## DATA IMAGES

**GTX21659 IHC Image**

IHC analysis of human spleen tissue using GTX21659 CCR6 antibody.



For full product information, images and publications, please visit our [website](#).