

CCR11 antibody

Cat. No. GTX21660

Host	Goat
Clonality	Polyclonal
Isotype	IgG
Applications	WB, ICC/IF, IHC-P, ELISA
Reactivity	Human, Mouse

Package
100 µg

Applications

Application Note

*Optimal dilutions/concentrations should be determined by the researcher.

Suggested dilution	Recommended dilution
WB	1:500
ICC/IF	Assay dependent
IHC-P	1:125
ELISA	1:37,500

Not tested in other applications.

Calculated MW	40 kDa. (Note)
----------------------	----------------------------------

Product Note	Peptide sequence is < 50 % identical to other human chemokine receptors in this region.
---------------------	---

Properties

Form	Liquid
Buffer	10mM KHPO ₄ , 140mM NaCl, 0.1% BSA
Preservative	0.1% Sodium azide
Storage	Store as concentrated solution. Centrifuge briefly prior to opening vial. For short-term storage (1-2 weeks), store at 4°C. For long-term storage, aliquot and store at -20°C or below. Avoid multiple freeze-thaw cycles.
Concentration	Batch dependent (Please refer to the vial label for the specific concentration.)
Immunogen	Synthetic peptide EQNQSTDYYYEENEMNGTYDYSQYELIC corresponding to amino acids 4-31 of human CCR11
Purification	Purified by affinity chromatography
Conjugation	Unconjugated



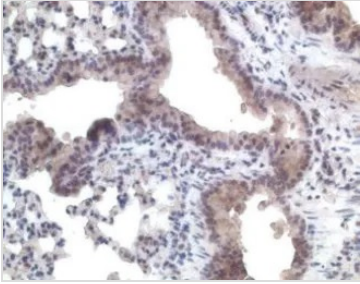
For full product information, images and publications, please visit our [website](#).

For laboratory research use only. Not for any clinical, therapeutic, or diagnostic use in humans or animals. Not for animal or human consumption.

Note

Purchasers shall not, and agree not to enable third parties to, analyze, copy, reverse engineer or otherwise attempt to determine the structure or sequence of the product.

DATA IMAGES

**GTX21660 IHC-P Image**

IHC-P analysis of mouse lung tissue using GTX21660 CCR11 antibody.



For full product information, images and publications, please visit our [website](#).