

CCR8 antibody

Cat. No. GTX21666

Host	Goat
Clonality	Polyclonal
Isotype	IgG
Applications	WB, IHC-P, FCM, ELISA, Neutralizing/Inhibition
Reactivity	Human

Package
100 µg

Applications

Application Note

*Optimal dilutions/concentrations should be determined by the researcher.

Suggested dilution	Recommended dilution
WB	1:500
IHC-P	1:125
FCM	2-6µl/10 ⁶ cells/50-100µl
ELISA	1:50,000
Neutralizing/Inhibition	Assay dependent

Not tested in other applications.

Calculated MW 41 kDa. ([Note](#))

Product Note Peptide sequence is <50 % identical to other human chemokine receptors in this region.

Properties

Form	Liquid
Buffer	10mM KHPO ₄ , 140mM NaCl, 1mg/ml BSA
Preservative	0.1% Sodium azide
Storage	Store as concentrated solution. Centrifuge briefly prior to opening vial. For short-term storage (1-2 weeks), store at 4°C. For long-term storage, aliquot and store at -20°C or below. Avoid multiple freeze-thaw cycles.
Concentration	Batch dependent (Please refer to the vial label for the specific concentration.)
Immunogen	Synthetic peptide VTDYYPDIFSSPCDAELIQTNGKL-C corresponding to aa 12-36 of human CCR8
Purification	Purified by affinity chromatography
Conjugation	Unconjugated

For full product information, images and publications, please visit our [website](#).

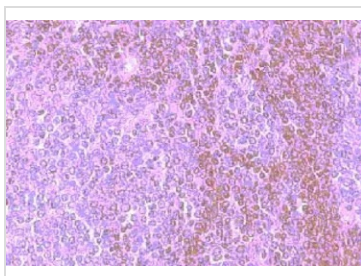
Date 2026 / 01 / 09 Page 1 of 2

For laboratory research use only. Not for any clinical, therapeutic, or diagnostic use in humans or animals. Not for animal or human consumption.

Note

Purchasers shall not, and agree not to enable third parties to, analyze, copy, reverse engineer or otherwise attempt to determine the structure or sequence of the product.

DATA IMAGES



GTX21666 IHC-P Image

IHC-P analysis of human spleen tissue using GTX21666 CCR8 antibody.



For full product information, images and publications, please visit our [website](#).