

## CCR3 antibody

Cat. No. GTX21667

Host	Goat
Clonality	Polyclonal
Isotype	IgG
Applications	WB, ICC/IF, ELISA, IHC
Reactivity	Human

Package  
100 µg

## Applications

## Application Note

\*Optimal dilutions/concentrations should be determined by the researcher.

Suggested dilution	Recommended dilution
WB	1:500
ICC/IF	Assay dependent
ELISA	1:30,000
IHC	1:300

Not tested in other applications.

Calculated MW 41 kDa. ( [Note](#) )

Product Note Peptide sequence is &lt; 50 % identical to other human chemokine receptors in this region.

## Properties

Form	Liquid
Buffer	10mM KHPO <sub>4</sub> , 140mM NaCl, 0.1% BSA
Preservative	0.1% Sodium azide
Storage	Store as concentrated solution. Centrifuge briefly prior to opening vial. For short-term storage (1-2 weeks), store at 4°C. For long-term storage, aliquot and store at -20°C or below. Avoid multiple freeze-thaw cycles.
Concentration	Batch dependent (Please refer to the vial label for the specific concentration.)
Immunogen	C-VETFGTTSYDDVGLLCEKADTRALMA 28 amino acid synthesized corresponding to aa 8-34 (cysteine added for coupling) of the N-terminal domain of human CCR3
Purification	Purified by antigen-affinity chromatography
Conjugation	Unconjugated

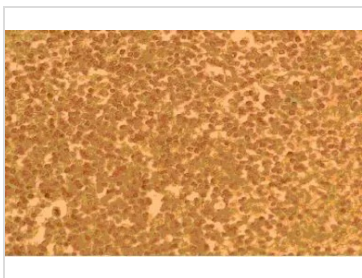
For full product information, images and publications, please visit our [website](#).

For laboratory research use only. Not for any clinical, therapeutic, or diagnostic use in humans or animals. Not for animal or human consumption.

**Note**

Purchasers shall not, and agree not to enable third parties to, analyze, copy, reverse engineer or otherwise attempt to determine the structure or sequence of the product.

## DATA IMAGES



### GTX21667 ICC/IF Image

ICC/IF analysis of human peripheral blood cells using GTX21667 CCR3 antibody.



For full product information, images and publications, please visit our [website](#).