

## CXCR4 antibody

Cat. No. GTX21670

Host	Goat
Clonality	Polyclonal
Isotype	IgG
Applications	WB, IHC-P, ELISA, IHC
Reactivity	Human, Mouse

References ( 3 )

Package

100 µg

## Applications

## Application Note

\*Optimal dilutions/concentrations should be determined by the researcher.

Suggested dilution	Recommended dilution
WB	1:500
IHC-P	Assay dependent
ELISA	1:25,000
IHC	1:300

Not tested in other applications.

Calculated MW 40 kDa. ( [Note](#) )

## Properties

Form	Liquid
Buffer	10mM KHPO <sub>4</sub> , 140mM NaCl, 0.1% BSA
Preservative	0.1% Sodium azide
Storage	Store as concentrated solution. Centrifuge briefly prior to opening vial. For short-term storage (1-2 weeks), store at 4°C. For long-term storage, aliquot and store at -20°C or below. Avoid multiple freeze-thaw cycles.
Concentration	Batch dependent (Please refer to the vial label for the specific concentration.)
Immunogen	YSEEVGSGDYDSNKEPCFRDENVHFNR corresponding to the N-terminal extracellular domain of mouse CXCR4 receptor
Purification	Purified by antigen-affinity chromatography
Conjugation	Unconjugated

## Note

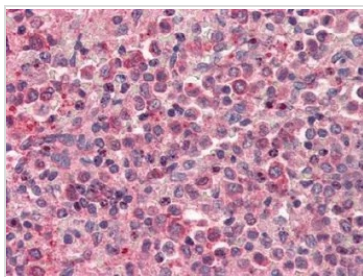
For laboratory research use only. Not for any clinical, therapeutic, or diagnostic use in humans or animals. Not for animal or human consumption.

Purchasers shall not, and agree not to enable third parties to, analyze, copy, reverse engineer or otherwise attempt to determine the structure or sequence of the product.



For full product information, images and publications, please visit our [website](#).

## DATA IMAGES



### GTX21670 IHC Image

IHC analysis of human spleen tissue using GTX21670 CXCR4 antibody.



For full product information, images and publications, please visit our [website](#).