

DR5 antibody

Cat. No. GTX21675

Host	Goat
Clonality	Polyclonal
Isotype	IgG
Applications	WB, FCM, ELISA, IHC
Reactivity	Human, Mouse

Package
100 µg

Applications

Application Note

*Optimal dilutions/concentrations should be determined by the researcher.

Suggested dilution	Recommended dilution
WB	1:500
FCM	2µl/10 ⁶ cells/100µl
ELISA	1:75,000
IHC	1:300

Not tested in other applications.

Calculated MW 48 kDa. ([Note](#))

Product Note <0.2% cross-reactivity to TRAIL R3 peptide of the same region. Not likely to bind TRAIL R1 due to low sequence homology in this region.

Properties

Form	Liquid
Buffer	10mM KHPO ₄ , 140mM NaCl, 0.1% BSA
Preservative	0.1% Sodium azide
Storage	Store as concentrated solution. Centrifuge briefly prior to opening vial. For short-term storage (1-2 weeks), store at 4°C. For long-term storage, aliquot and store at -20°C or below. Avoid multiple freeze-thaw cycles.
Concentration	1 mg/ml (Please refer to the vial label for the specific concentration.)
Immunogen	Synthetic peptide 68APQQRSSPSEGLCPPGHISEDGRDC94 of the extracellular domain of human TRAIL-R2 (DR5)
Purification	Purified by affinity chromatography
Conjugation	Unconjugated



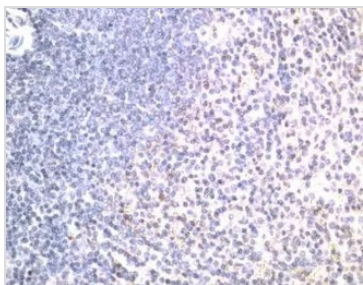
For full product information, images and publications, please visit our [website](#).

Note

For laboratory research use only. Not for any clinical, therapeutic, or diagnostic use in humans or animals. Not for animal or human consumption.

Purchasers shall not, and agree not to enable third parties to, analyze, copy, reverse engineer or otherwise attempt to determine the structure or sequence of the product.

DATA IMAGES



GTX21675 IHC Image

IHC analysis of human spleen tissue using GTX21675 DR5 antibody.



For full product information, images and publications, please visit our [website](#).